

# **The Success of EAB Outreach Advancing the Message**

Presented by: Sharon Lucik, USDA, APHIS

## **C o n t i n e n t a l D i a l o g u e**

**on Non-Native Forest Insects and Diseases**

**November 12-13, 2008**

**Grand Rapids, Michigan**

# Continuity of Message

- Don't Move Firewood
- Visually inspect your trees
- Know State and Federal regulations
- Spread the word
- Ask questions

# Cooperating Partners

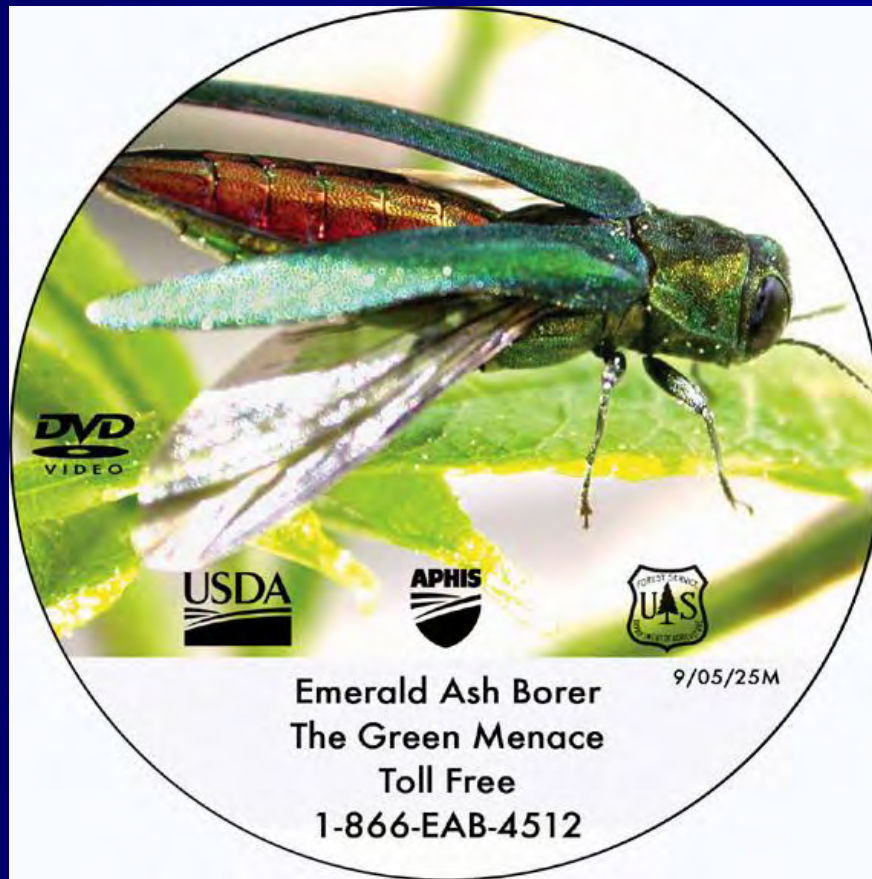
- United States Department of Agriculture
- USDA Forest Service
- Illinois Department of Agriculture
- Indiana Departments of Natural Resources
- Maryland Department of Agriculture
- Michigan Department of Agriculture
- Ohio Department of Agriculture
- Pennsylvania Department of Agriculture
- Virginia Department of Agriculture
- Wisconsin Department of Agriculture
- West Virginia Department of Agriculture
- Michigan Department of Natural Resources
- Canadian Food Inspection Service
- Kentucky State University
- Michigan State University
- Michigan Technological University
- The Ohio State University
- Purdue University
- Tennessee State University
- City of Chicago
- City of Fairfax
- Army Corps of Engineers
- The Great Plains Initiative
- Invasive Species Council
- Motor Carrier Divisions
- The Nature Conservancy
- Smokey Mountain National Park
- Arborists
- City Foresters
- Continental Dialogue
- District Foresters
- Municipalities
- Utilities
- Urban Foresters
- Campground Owners
- Louisville Slugger
- NASCAR
- Nursery Owners
- Scouts
- Morton Arboretum
- Firewood Dealers
- Landscapers

# National Media Attention

- The Weather Channel: Forecast Earth
- The Today Show
- Parade Magazine
- Weekly Reader
- National Geographic Magazine
- Sports Illustrated

# **EMERALD ASH BORER documentary Chinese beetle DVD rare \$19.99eBay**

Find EMERALD ASH BORER documentary Chinese beetle DVD rare on eBay in the category DVDs & Movies>DVD, HD DVD & Blu-ray for \$19.99.





- Bristol Motor Speedway & Dragway Area Campground Maps
- [CLICK HERE](#) for a view of the campgrounds and parking map.
- [Download printable version here.](#)
- [CLICK HERE](#) for a view of The Landing.
- [CLICK HERE](#) for information on camping for the NHRA O'Reilly Thunder Valley Nationals.
- Additional information about BMS event camping at Bristol Dragway
- Shower House/Restroom facility features 44 shower stalls
- Several dump stations and water available to fill tanks
- Septic service available
- Free shuttle service to speedway
- Free shuttle service to Food City
- RV spaces are approximately 16-feet x 40-feet for non-hook-up spaces; Premium and Medallion Spaces are 20-feet x 50-feet
- No open fires
- No on-site propane tank refill service available
- No golf carts or ATV-type vehicles (strictly enforced)
- No electrical hook-ups except in Premium and Medallion Areas
- No fireworks



# Louisville Slugger

Louisville Slugger - The Official Bat of Major League Baseball, over 125 years of performance - Microsoft Internet Explorer

File Edit View Favorites Tools Help

Address http://www.slugger.com/ Go

**Louisville Slugger**  
since 1884

[Home](#) [The Slugger Story](#) [Coach's Tips](#) [Dealer Locator](#) [Customer Service](#) [Press Box/News](#)

[BASEBALL](#) [FASTPITCH](#) [SLOWPITCH](#)

## TURNING PLAYERS INTO LEGENDS

SINCE 1884

Before Little League. Before the World Series. Even before the rule that says three strikes mean you're out, Louisville Slugger was already perfecting the bats that would write the history of the game. Over the past 125 years, no other brand has logged more wins, captured more titles and set more records than the legendary bats of Louisville Slugger.

ONLINE TUTORIALS TO IMPROVE YOUR GAME

JESSICA MENDOZA'S Fast Pitch Tips

JOE TORRES' Coaches' Tips

LOUISVILLE SLUGGER'S How To Choose Your Bat

**Emerald Ash Borer**  
Learn More >

PERSONALIZED BATS AVAILABLE AT SLUGGERGIFTS.COM

CLICK HERE >

**THE SLUGGER STORY**  
The history, technology and players behind America's most legendary bat.  
CLICK HERE >

**UFW**  
ULTIMATE PITCHING MACHINE

**PRACTICE PARTNER**  
TRAINING EQUIPMENT

Bionic Gloves | Personalized Bats | Dealer Locator | Warranty | Garantia (Espanol)  
Press Box/News | Louisville Slugger Japan | Louisville Slugger Museum

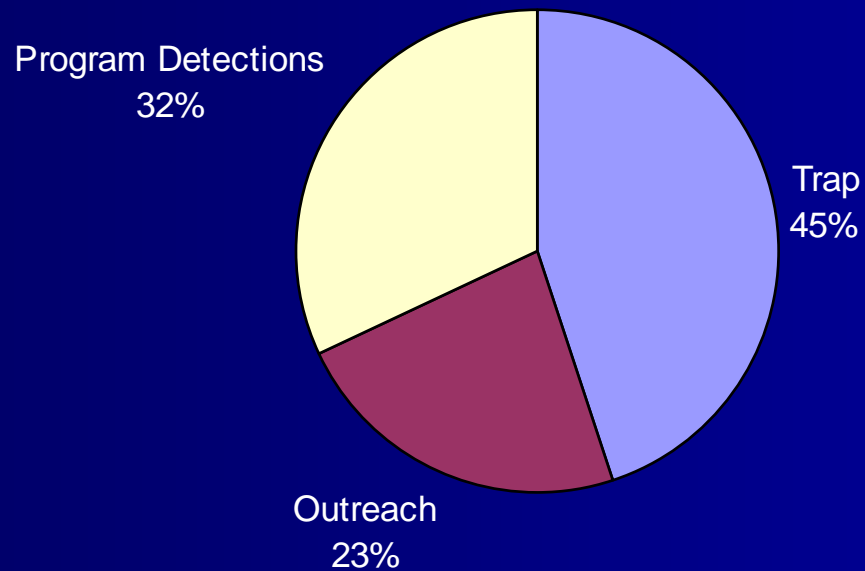
© Copyright 2008 Hillerich & Bradsher, All Rights Reserved.

# 2008 EAB Survey





# New County Detections 2008



# Acknowledgements

- United States Department of Agriculture
- USDA Forest Service
- Illinois Department of Agriculture
- Indiana Departments of Natural Resources
- Maryland Department of Agriculture
- Michigan Department of Agriculture
- Ohio Department of Agriculture
- Pennsylvania Department of Agriculture
- Virginia Department of Agriculture
- Wisconsin Department of Agriculture
- West Virginia Department of Agriculture
- Michigan Department of Natural Resources
- Canadian Food Inspection Service
- Kentucky State University
- Michigan State University
- Michigan Technological University
- The Ohio State University
- Purdue University
- Tennessee State University
- City of Chicago
- City of Fairfax
- Army Corps of Engineers
- The Great Plains Initiative
- Invasive Species Council
- Motor Carrier Divisions
- The Nature Conservancy
- Smokey Mountain National Park
- Arborists
- City Foresters
- Continental Dialogue
- District Foresters
- Municipalities
- Utilities
- Urban Foresters
- Campground Owners
- Louisville Slugger
- NASCAR
- Nursery Owners
- Scouts
- Morton Arboretum
- Firewood Dealers
- Landscapers