

Continental Dialogue on Non-Native Forest Insects & Diseases 10th Meeting

November 3-4, 2014

Enhanced Enforcement Proposals and Practices

Wood Packaging Materials



U.S. Customs and
Border Protection

Kevin C. Harriger

Executive Director

Agriculture Programs and Trade Liaison



U.S. Customs and
Border Protection

Pest Risk Threat to America's Forests

- Asian Gypsy Moth
- Wood Boring Pests
- Federal Noxious Weeds

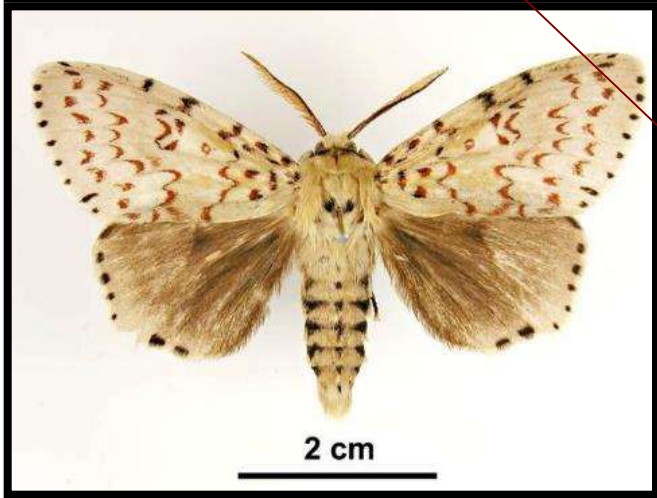


U.S. Customs and
Border Protection

Kevin C. Harriger
Executive Director

Asian Gypsy Moth (AGM)

- Asian Gypsy Moth (AGM), *Lymantria dispar asiatica* Vnukovskij (Lymantriidae) is a very serious forest pest.
- AGM is known to attach to vessels operating in Korea, Japan, China and East Russia during outbreak periods.



U.S. Customs and
Border Protection

Kevin C. Harriger
Executive Director

Asian Gypsy Moth (AGM)



- CBP Specialists inspect high-risk vessels based on itinerary/history
- Trade partners can encourage operational vessel personnel to note when Asian ports are active with AGM.
- CBP's Carrier Conveyance Contamination Outreach Initiative provides AGM detection information to trade industry stakeholders.



U.S. Customs and
Border Protection

Kevin C. Harriger
Executive Director

Asian Gypsy Moth (AGM)



AGM Interceptions **National Region:**

- CY 11 - 21
- CY 12 - 44
- CY 13 - 42
- CY 14 – 50



U.S. Customs and
Border Protection

Kevin C. Harriger
Executive Director

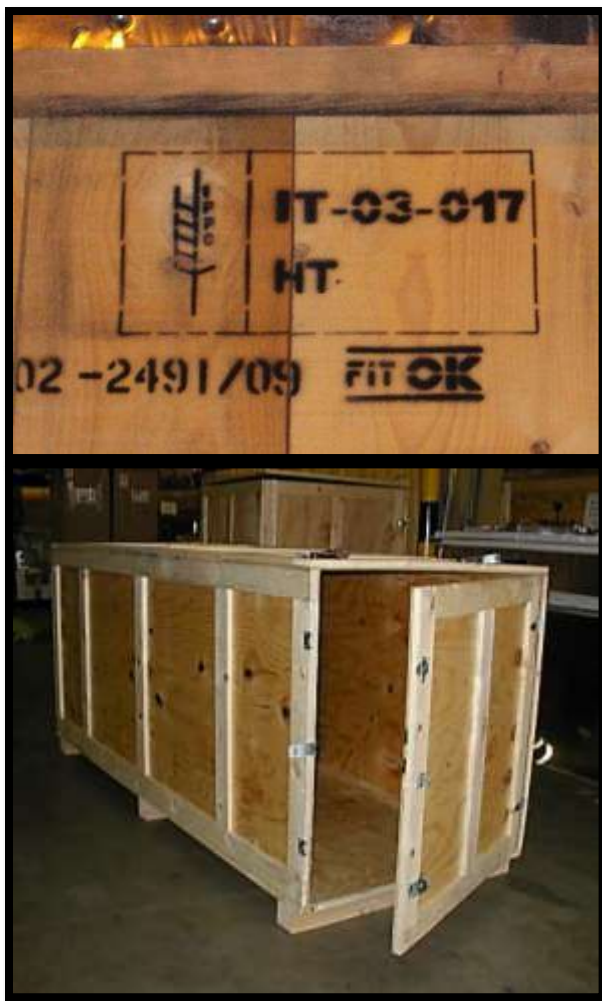
Best Practices to Prevent AGM

To ensure carrier conveyances are free of hitchhiking pests, including AGM, and plant debris contaminants:

- Monitor the cargo staging area to ensure the cargo is not under lighting that might attract insects and increase the probability of infestation.
- Utilize baits, traps, or barriers to prevent infestations from occurring in the cargo staging area. For example, salt barriers may be used to protect against snail infestations.



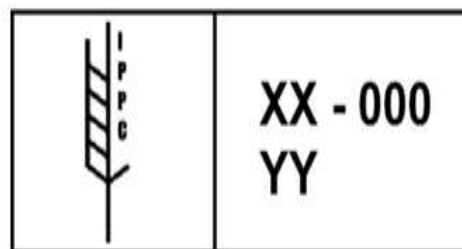
Wood Boring Pest Exclusion Efforts



CBP enforces the International Plant Protection Convention (IPPC) requirements for Wood Packaging Material (WPM)

■ IPPC Logo

- XX : Country Code
- 000 : Facility Number
- YY : Treatment Type



U.S. Customs and
Border Protection

Kevin C. Harriger
Executive Director

CBP Inspection of WPM



- Bore holes and/or frass are indications that wood boring pests are present.
- Larval galleries indicate presence of pest infestation.



Larval Galley



U.S. Customs and
Border Protection

Kevin C. Harriger
Executive Director

Non-compliant WPM & Total Agriculture Exams

National Totals

| Non-Compliance | | | | | |
|-------------------------|--------------|--------------|--------------|--------------|--------------|
| | FY10 | FY11 | FY12 | FY13 | FY14 |
| No ISPM-15 marking | 2,615 | 2,269 | 2,449 | 2,586 | 1,938 |
| Pest found | 861 | 686 | 885 | 1,058 | 603 |
| No Marking & Pest Found | 21 | 24 | 17 | 21 | 18 |
| Grand Total | 3,497 | 2,979 | 3,351 | 3,665 | 2,559 |

| Total Agriculture Inspections | | | | | |
|--------------------------------------|----------------|----------------|----------------|----------------|----------------|
| | FY10 | FY11 | FY12 | FY13 | FY14 |
| Miscellaneous Cargo | 264,954 | 238,322 | 240,240 | 242,655 | 204,281 |
| Regulated Cargo | 465,978 | 467,547 | 479,968 | 472,069 | 499,198 |
| Grand Total | 730,932 | 705,869 | 720,208 | 714,724 | 703,479 |



U.S. Customs and
Border Protection

Kevin C. Harriger
Executive Director

Non-compliant WPM & Total Agriculture Exams

Mid-Atlantic Region: Atlanta, Baltimore, Boston, Buffalo, New York

| Non-Compliance | | | | | |
|-------------------------|------------|------------|------------|------------|------------|
| | FY10 | FY11 | FY12 | FY13 | FY 14 |
| No ISPM-15 marking | 359 | 285 | 257 | 344 | 293 |
| Pest found | 27 | 10 | 18 | 33 | 52 |
| No Marking & Pest Found | 2 | 4 | 1 | 3 | 1 |
| Grand Total | 388 | 299 | 276 | 380 | 346 |

| Total Agriculture Inspections | | | | | |
|-------------------------------|----------------|----------------|----------------|----------------|----------------|
| | FY10 | FY11 | FY12 | FY13 | FY 14 |
| Miscellaneous Cargo | 92,940 | 92,454 | 100,493 | 95,744 | 70,304 |
| Regulated Cargo | 60,742 | 59,467 | 61,814 | 62,978 | 57,384 |
| Grand Total | 153,682 | 151,921 | 162,307 | 158,722 | 127,688 |



U.S. Customs and
Border Protection

Kevin C. Harriger
Executive Director

WPM Strategy Tools



- USDA Regulations
- Training
 - CBP Officers and Agriculture Specialists
- Outreach & Education
 - Contamination Conveyance for Trade
- Enforcement Strategies
 - 19 CFR Penalties



U.S. Customs and
Border Protection

Kevin C. Harriger
Executive Director

WPM Outreach to Industry



U.S. Customs and
Border Protection

Kevin C. Harriger
Executive Director

Best Practices to Prevent Wood Boring Pests

To ensure carrier conveyances are free of WPM with wood-boring insects:

- Require compliant WPM in the exporter's contract.
- Educate your supply chain on the regulatory requirements.
- Explore alternatives to WPM.
- Conduct a cost-benefit analysis when exploring alternatives.



Federal Noxious Weed Seeds (FNW)



U.S. Customs and
Border Protection

Kevin C. Harriger
Executive Director

Best Practices to Prevent FNW

To ensure carrier conveyances are free of Federal Noxious Weed seed and soil contaminants:

- Visually inspect the exterior and interior of conveyances for contamination prior to arrival in the United States.
- Sweep, vacuum, or wash conveyances prior to loading and be cognizant that environmental factors, such as heavy rains, may increase the likelihood of soil contamination.



Agriculture Enforcement Alerts

Wood Packaging Material Contaminated with Federal Noxious Weed Seeds



U.S. Customs and
Border Protection

Kevin C. Harriger
Executive Director

Agriculture Enforcement Alerts

Truck Grill Contaminated with Federal Noxious Weed Seeds



U.S. Customs and
Border Protection

Kevin C. Harriger
Executive Director

Agriculture Enforcement Alerts

Containers Contaminated with Soil



U.S. Customs and
Border Protection

Kevin C. Harriger
Executive Director

Agriculture Enforcement Alerts

Soil Contamination



U.S. Customs and
Border Protection

Kevin C. Harriger
Executive Director

Agriculture Enforcement Alerts

Cecidomyiinae sp. and *Phaecasiophora fernaldana*



- Port of Buffalo, New York
- A sea container of valves arrives from China
- Insects were found upon inspection
- Two reportable pests identified
- Container placed on hold pending re-export



U.S. Customs and
Border Protection

Kevin C. Harriger
Executive Director

Agriculture Enforcement Alerts

Vessel Moorings and Superstructure Contaminated with AGM Egg Masses



U.S. Customs and
Border Protection

Kevin C. Harriger
Executive Director

Agriculture Enforcement Alerts

Three Live Scolytidae Intercepted in Firewood



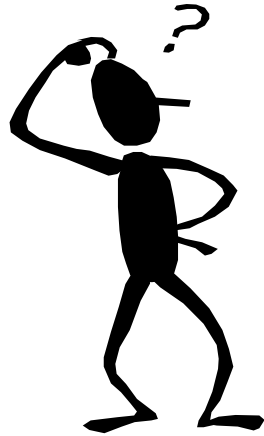
- El Paso, Texas
- Land Border Cargo
- Originating from Mexico
- Live Wood Borers Found
- EAN Issued
- Shipment was Re-exported



U.S. Customs and
Border Protection

Kevin C. Harriger
Executive Director

Questions?



U.S. Customs and
Border Protection