



Thousand Cankers Disease of Black Walnut

Missouri's Response to Dealing with
a
Federally Unregulated Pest

What is Thousand Cankers Disease?

- An Insect/Disease Complex that Affects a New Host-Eastern Black Walnut (*Juglans nigra*)
- A New Association between a Native Bark Beetle [the Walnut Twig Beetle, *Pityophthorus juglandis* and a Previously Undescribed Fungus, *Geosmithia morbida*]

The Walnut Twig Beetle

Pityophthorus juglandis



Photo by Steve Valley



Oregon

Department
of Agriculture

The Walnut Twig Beetle

Pityophthorus juglandis

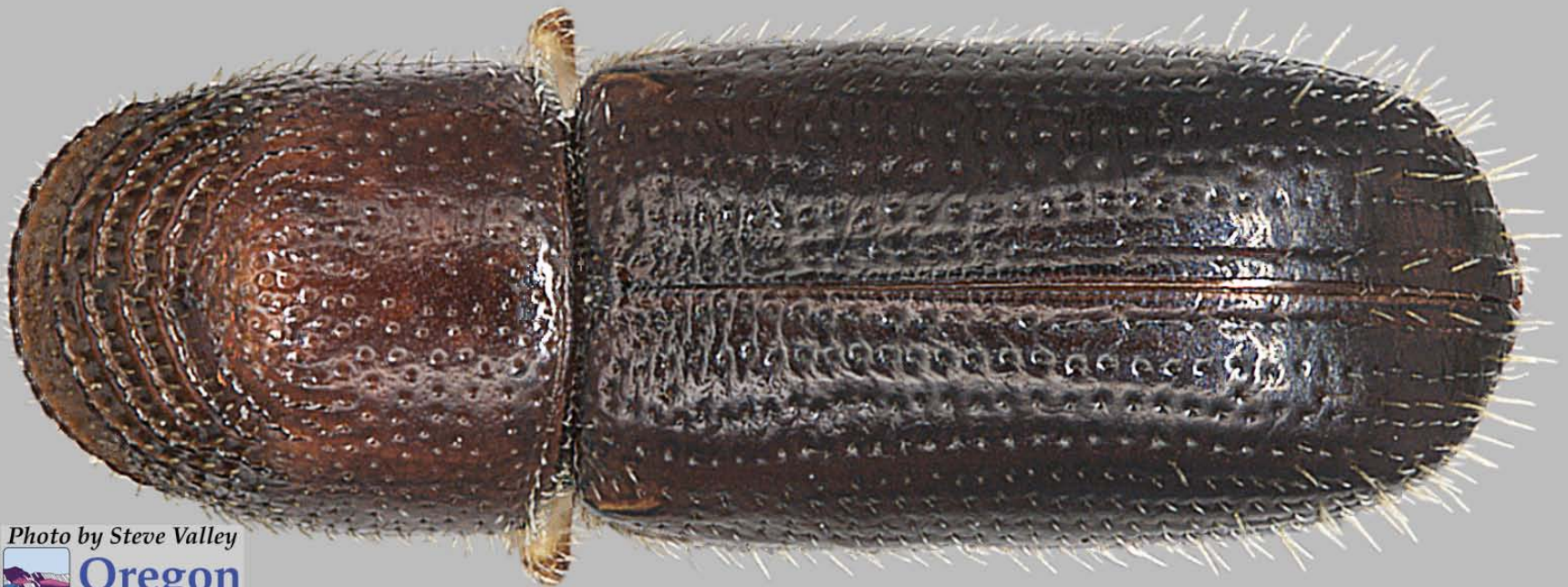


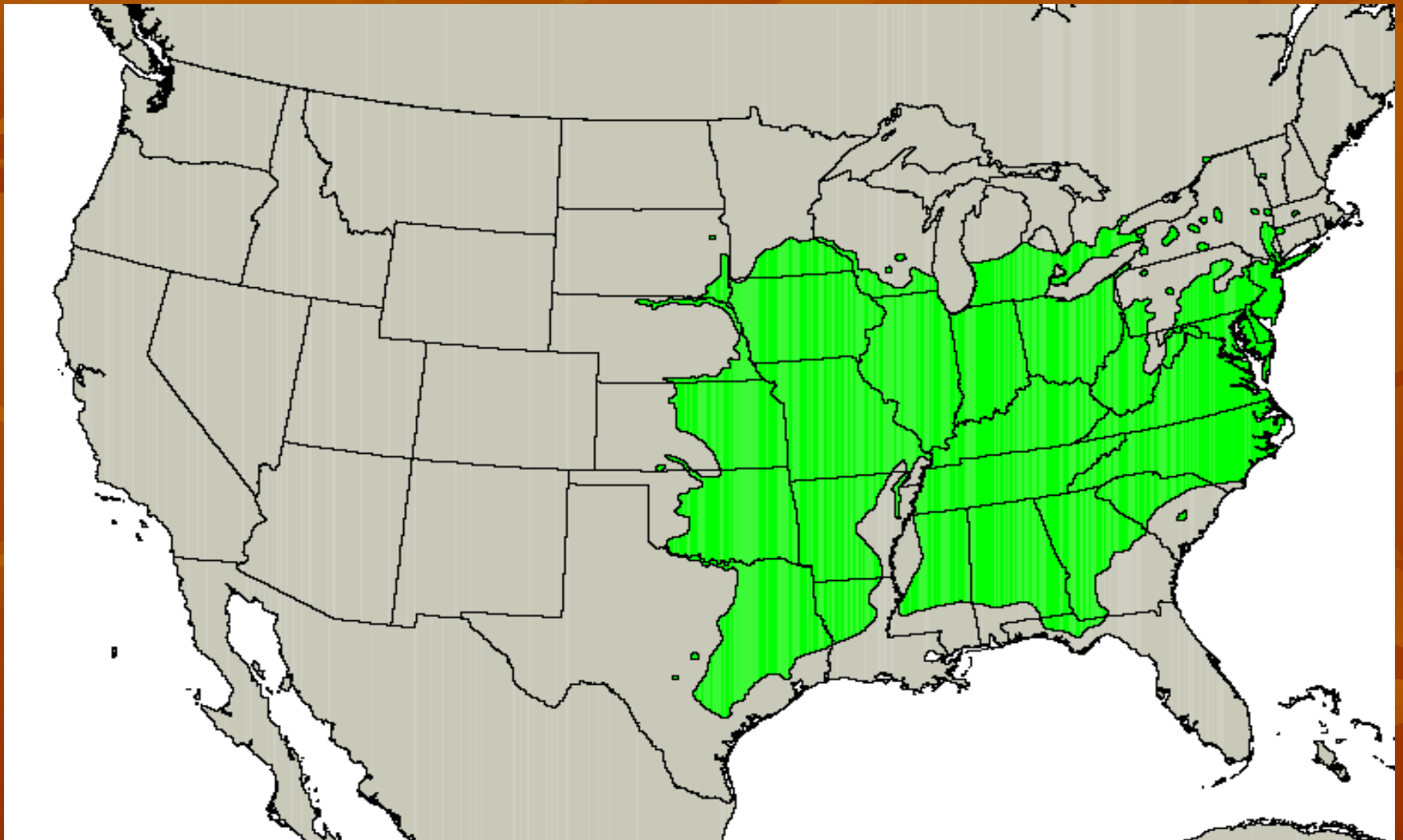
Photo by Steve Valley



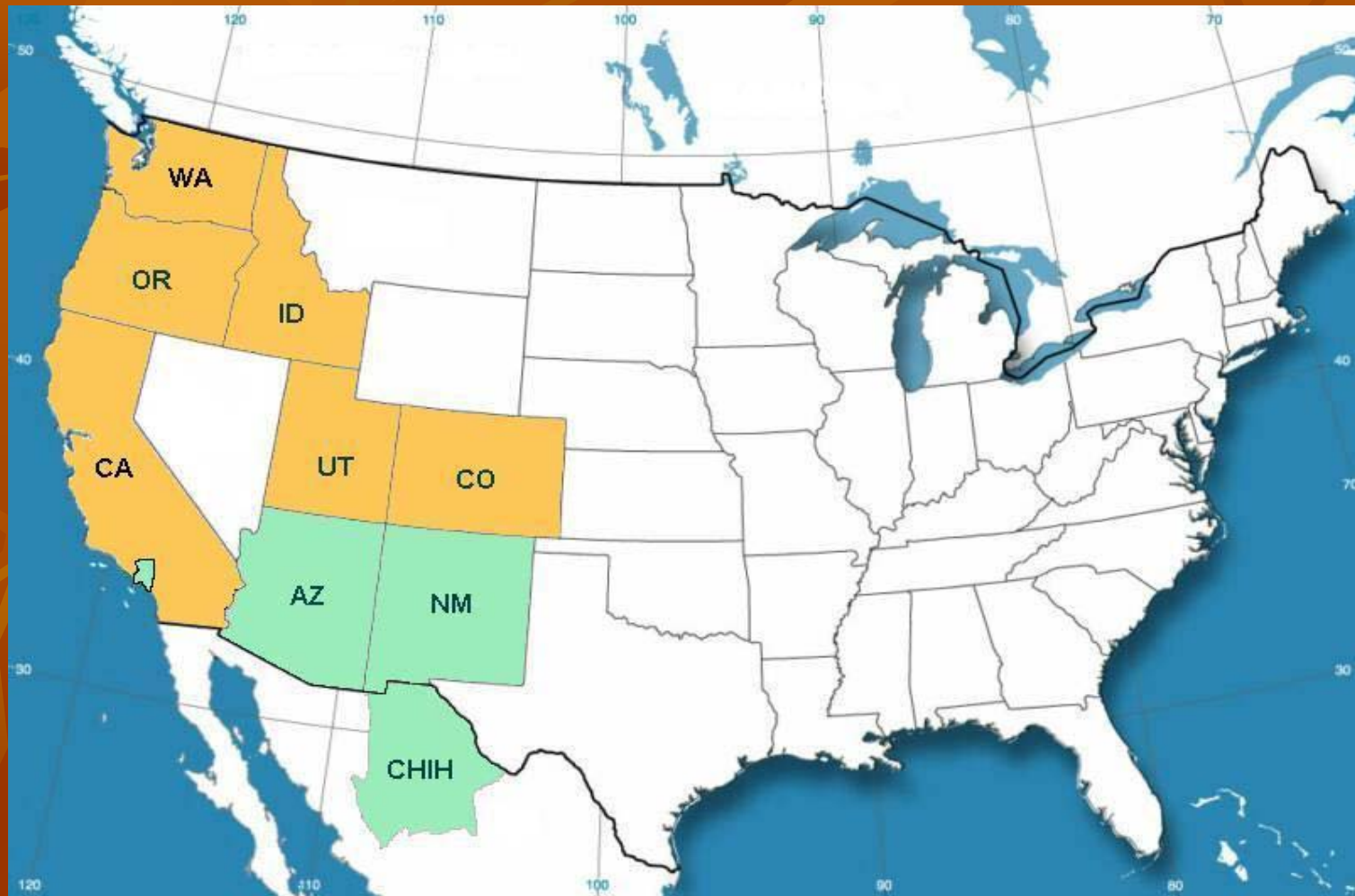
Oregon

Department
of Agriculture

Natural Range of Eastern Black Walnut



Natural and Current Range of the Walnut Twig Beetle



What does the Beetle and the Fungus do to Black Walnut?



How Would the Loss of Black Walnut Affect Missouri?

- Economically it is one of our most valuable hardwoods in the state.
- Missouri is the largest producer of Black Walnut nutmeats in the world
- It is an important timber species-it is used for lumber, veneer, gun stocks, cabinetry, etc.
- It is an important mast species-We've already lost American Chestnut and Butternut

Many growers have from 15 to 40 years invested in growing walnut



Pathways

- Walnut logs moving from west to east
- Budwood, rootstock, etc.
- Lumber sawn from Black Walnut which died of Thousand Cankers Disease--air-dried, bark on, sold through eBay for cabinetry, woodturning, etc.
- Firewood

Requirements for an Exterior Quarantine

- Regulated Articles (Including the actual insects or pathogen)
- Treatments/Safeguarding Measures
- States Named in the Quarantine
- Economic Impact on Missouri Industries and State Agencies
- Stipulations for moving regulated articles from the named States-State Phytos, C.A.'s, etc.

Effective Protection Requires Multi-State Cooperation

- Near parallel quarantines
- Similar regulatory language
- Stipulations for moving regulated articles must be easily understood
- Enforceable

First Steps

- Awareness
- Education
- Consensus Building
- Regulation
- Enforcement
- Protection

Thousand Cankers Disease of Black Walnut National Conference

- St. Louis, Missouri-November 3-4, 2009
- Doubletree St. Louis at Westport
- Over 20 sponsorships
- 16 Speakers
- Half-Day Panel Discussion
- 120+ Participants from all areas of interest