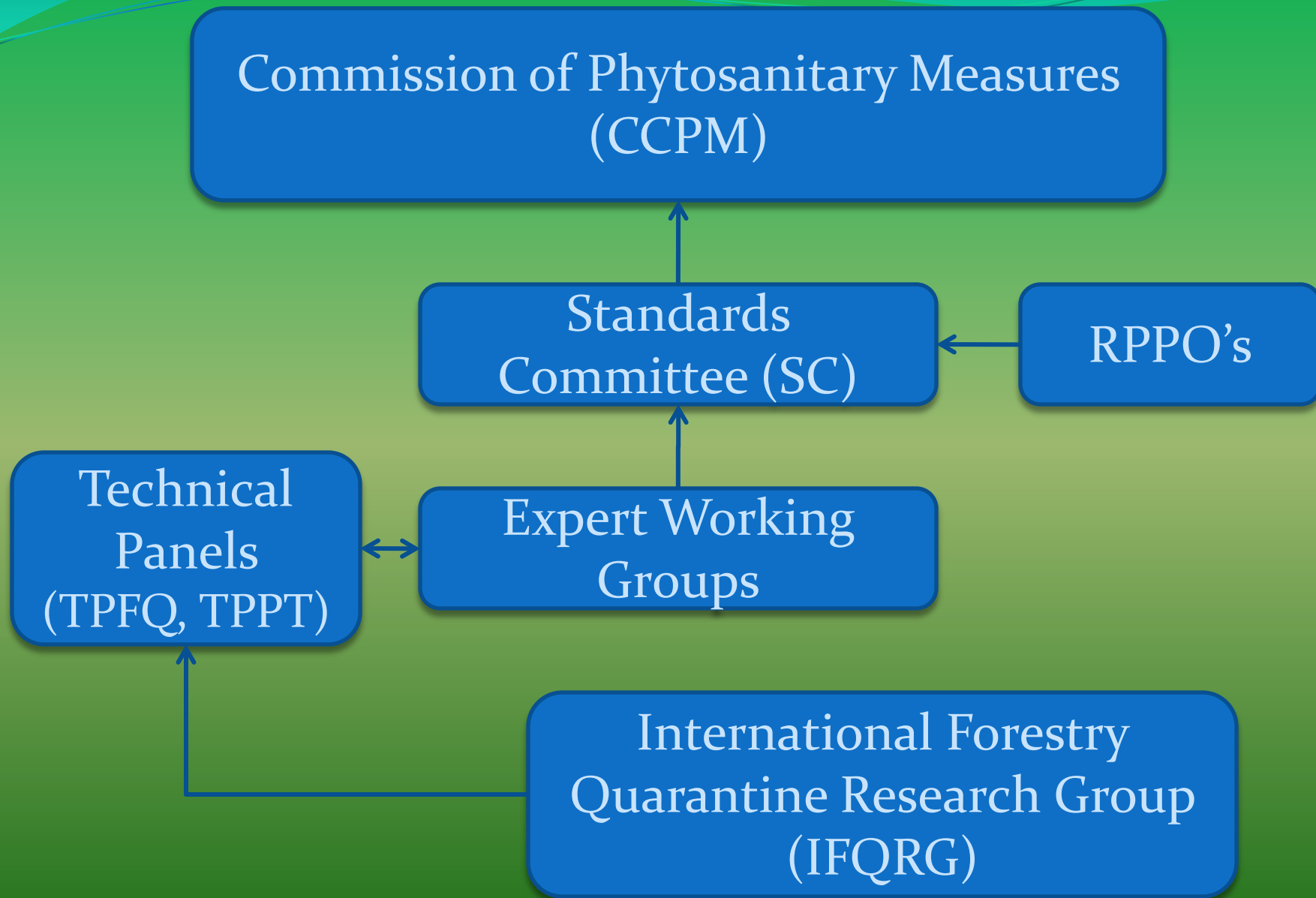


ISPM – 15

**CONTINENTAL DIALOGUE
ON NON-NATIVE
FOREST INSECTS & DISEASES**

Ron Mack
USDA - APHIS - PPQ – CPHST
Otis Laboratory
Buzzards Bay, MA 02542



ISPM – 15

- Heat treatment 56°C / 30 minutes throughout profile of wood
- Fumigation by methyl bromide according to approved schedule
- De-barked wood



ISPM – 15

- Flexible, amendable template for universal wood treatments
- Past revisions to MB schedule ... final concentrations, schedule length. Bark tolerance language added in 2009
- Draft appendix in country consultation

Draft Appendix to ISPM 15: 2009

Submission of new treatments for inclusion to ISPM - 15

- Determination of response of quarantine pest species to proposed treatment
- Determination of the most treatment resistant species and life stage within each pest group, and selection of appropriate testing conditions
- Determination of whether a substitute test species may be used
- Determination of efficacy against the target test species
- Determination of equivalency of efficacy during experimental testing with same under operational conditions
 - Assessment of treatment success
 - Submission of treatment for approval

New Treatment Submission

- ISPM – 28 concerns new treatment submission and adoption
- 72 treatments submitted since call for treatments in 2005, 2007
- Lack of developed criteria has hampered treatment evaluation
- Most treatments closed or withdrawn. Many sent back to NPPO's for more information
- Most treatments recommended to SC have been irradiation treatments
- 7 submissions for wood and ISPM - 15

Wood Treatment Submission

- 2 are **phosphine** - 1 since closed, 1 needs more information (New Zealand)
- Ecotwin – **MITC plus SF** (Japan)
- **Hydrogen cyanide** – more information needed
- **Methyl iodide** – only ALB information needed for Japan; opportunity for us to help
- **Microwave** – recommended to SC for member consultation next year (EU)
- **Sulfuryl fluoride** – only need to demonstrate Probit 9 efficacy for PWN. Split temperature schedule approved
- All of these wood treatments are on a fast track

Microwave

- 60°C for 1 minute throughout wood profile
- Wood must be de-barked
- Wood less than 20 cm

Sulfuryl fluoride

- Split temperature schedule
- 15 – 17.9°C and then > 30°C
- Will limit usefulness in industrial practice

ISPM–15 challenges

- Acceptance thresholds higher for new treatments
- Thermotolerance
 - Emerald Ash Borer (EAB)
 - Fungi
- Compliance

Candidate for new submission

Radiofrequency (RF) as a dielectric heat treatment for wood

