

The background of the slide is a photograph of several bare, dark trees with intricate branch structures against a clear, pale blue sky. The trees are mostly without leaves, suggesting a late autumn or winter setting. The text is overlaid on this image in a bright yellow color.

Policy actions by the Coalition Against Forest Pests

Faith Campbell

Center for Invasive Species Prevention

phytadoer@aol.com

Appropriations for APHIS

Ask:

maintain the FY15
funding levels for two
“lines” :

\$54 million for “Tree and
Wood Pests”

&

\$156 million for
“Specialty Crops”

16 Signatories:

- American Forest and Paper Association
- American Forests
- AmericanHort
- American Public Gardens Association
- California Forest Pest Council
- Center for Invasive Species Prevention
- Davey Institute
- Hardwood Plywood and Veneer Association
- National Association of State Foresters
- National Network of Forest Practitioners
- National Woodland Owners Association
- Society of American Florists
- Society of American Foresters
- The Nature Conservancy
- Tree Care Industry Association
- Vermont Woodlands Association



Appropriations for USFS

Ask:

- Forest Health Management - \$111 million (\$63 M for Federal Lands, \$48 M for Cooperative Lands)
- Forest & Rangeland Research program - \$303 million

15 Signatories:

- American Forest Foundation
- American Forests
- American Public Gardens Association
- California Forest Pest Council
- Center for Invasive Species Prevention
- National Alliance of Forest Owners
- National Association of Conservation Districts
- National Association of State Foresters
- National Network of Forest Practitioners
- National Wild Turkey Federation
- National Woodland Owners Association
- Society of American Foresters
- The Nature Conservancy ·
- Tree Care Industry Association
- Vermont Woodlands Association

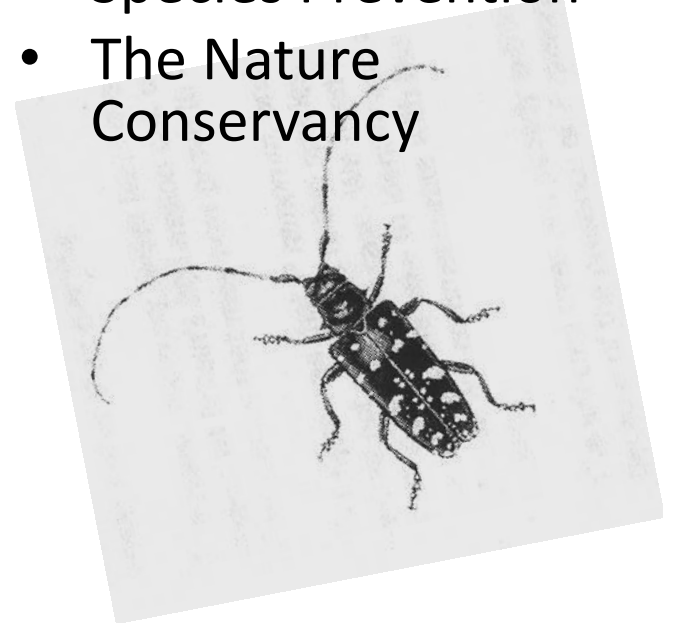
Comments on APHIS programmatic EIS for ALB program

Major points:

- Support program goal
- Environmental downsides of program localized compared to ALB risk
- Strengthen descriptions of resources at risk, esp. wider geographies, specific cities, & permanence of damage
- Strengthen emphasis on firewood
- Likelihood of continuing introductions via wood packaging

Signatories:

- American Forest Foundation
- American Forests
- Center for Invasive Species Prevention
- The Nature Conservancy



US-Canada wood packaging: attempt to meet with USDA & OMB

2010 letter signed
by 29 Dialogue
participants
(largest number
ever!)



Signatories of 2015 letter (9):

- American Forests
- AmericanHort
- California Forest Pest Council
- Center for Invasive Species Prevention
- The Davey Institute
- National Christmas Tree Association
- Society of American Florists
- Tree Care Industry Association
- Vermont Woodlands Association

Dialogue Policy Work: Options

premises:

- 1) agencies' actions are hindered by inadequate funding
- 2) APHIS is key to prevention & slowing pest spread
- 3) reasons APHIS disappoints us arise primarily from lack of support at Secretarial, Congressional, and media levels, not from APHIS leadership

Essential Work

(won't change fundamentals)

- Lobby Congress, USDA, and OMB to increase appropriations for APHIS & USFS Forest Health Management & Research programs
- Lobby USDA leadership to change the current policy re: 5 non-penalized detections of non-compliant SWPM per year
- Lobby USDA leadership and OMB to complete several key USDA rulemakings
 - Firewood certification program (AMS, not APHIS)
 - Q-37 – finalize regulations revamping approach;
 - Finalize NAPPRA Round 2; publish subsequent rounds promptly
 - US-Canada wood packaging
- improve data collection & make data easily accessible to independent analysts for assessment of programs' efficacy

Bold / paradigm changing

- CBP incorporate the wood packaging requirements into C-TPAT
- APHIS re-consider requiring importers to switch to packaging made from materials other than wooden boards.
- Amend the Plant Protection Act to give phytosanitary protection & natural-area pests higher priority. Several options:
 - Amend section (3) of the Plant Protection Act
 - In Farm Bill, raise priority for management of natural-area plant pests & weeds
 - Give Congressional committees with jurisdiction over natural resources joint oversight of APHIS programs
- Explore which agencies can respond when a state where a pest is located chooses not to regulate
- Explore mandating that APHIS consider individual states' internal level of protection when conducting national level risk assessments and adopting management plans.