



Systems Approach to Nursery Certification

Craig Regelbrugge, AmericanHort
CraigR@AmericanHort.org

History of SANC (Systems Approach to Nursery Certification)

- ▶ Cooperative effort involving:
 - AmericanHort, HRI, and collaborators
 - National Plant Board (State Departments of Agriculture)
 - USDA–APHIS
- ▶ Began in 2010
- ▶ SANC pilot initiated 2014



What Is It?

- ▶ Risk-Based Certification Program based on:
 - Hazard Analysis for plant pests
 - Critical Control Points identification
 - Risk Prevention and Mitigation through Best Management Practices
- ▶ Alternative method to certify plant material
 - Moves away from reliance on annual and/or pre-shipment inspections
 - Voluntary

Implementing SANC in Plant Production

► Risk Assessment

- Identifies hazards (risks), critical control points, and mitigation strategies (BMPs)

► Development of SANC Manual

- Formalizes and documents facility's procedures
- Pest Management Plan (BMPs and Scouting)

► Approval of SANC Manual

- Ensures facility's plan meets SANC Standard

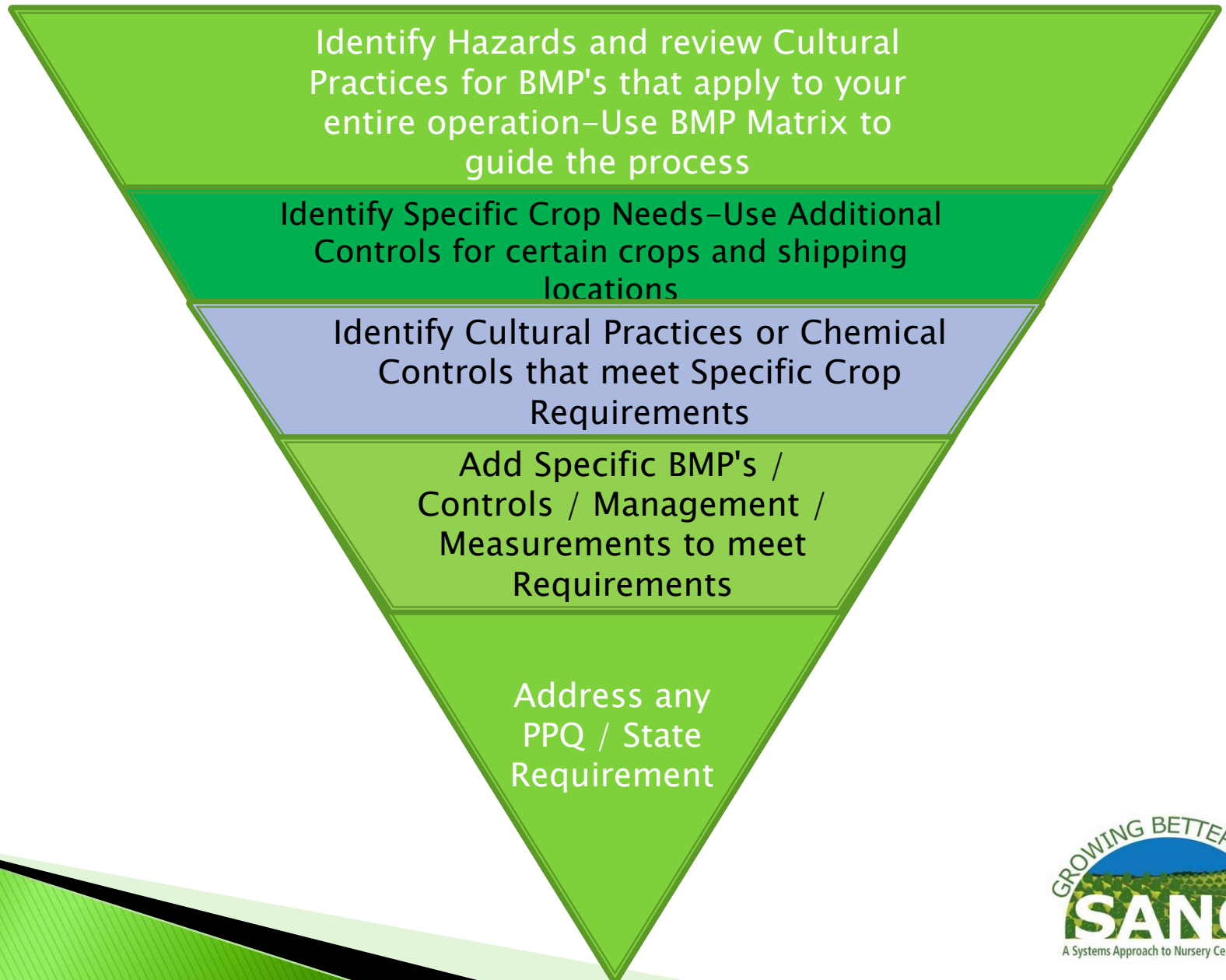
► Implementation of components in SANC Manual

- BMPs, Recordkeeping, training, etc.

► Audits

- Ensures facility's plan is being implemented as described in its SANC Manual

Risk Assessment



Pest Management Plan

- ▶ BMPs to mitigate identified hazards (CCP Checklist):
 - Inputs (Plants)
 - Propagation Practices
 - Media & Containers
 - Site
 - Shipping
 - Water
 - Production Practices
 - Disposal

Hazard / CCP / BMP Checklist

Component, site, or stage of production	Target pests or pathogens	Contamination Hazard	BMP
Water management	Waterborne pathogens	Infected surface irrigation water	Disinfect irrigation water using effective methods.
Water management	Waterborne pathogens, fungus gnats, moth flies, shoreflies, molluscs, nematodes	Splash dispersal of pathogens; pest damage from standing water	Prevent standing water by not overwatering and correcting drainage problems, or by raising containers off the ground.
Water management	Waterborne pathogens	Recycled or recaptured water	Disinfect recycled and recaptured water using effective methods. Note; runoff from production may be regulated.

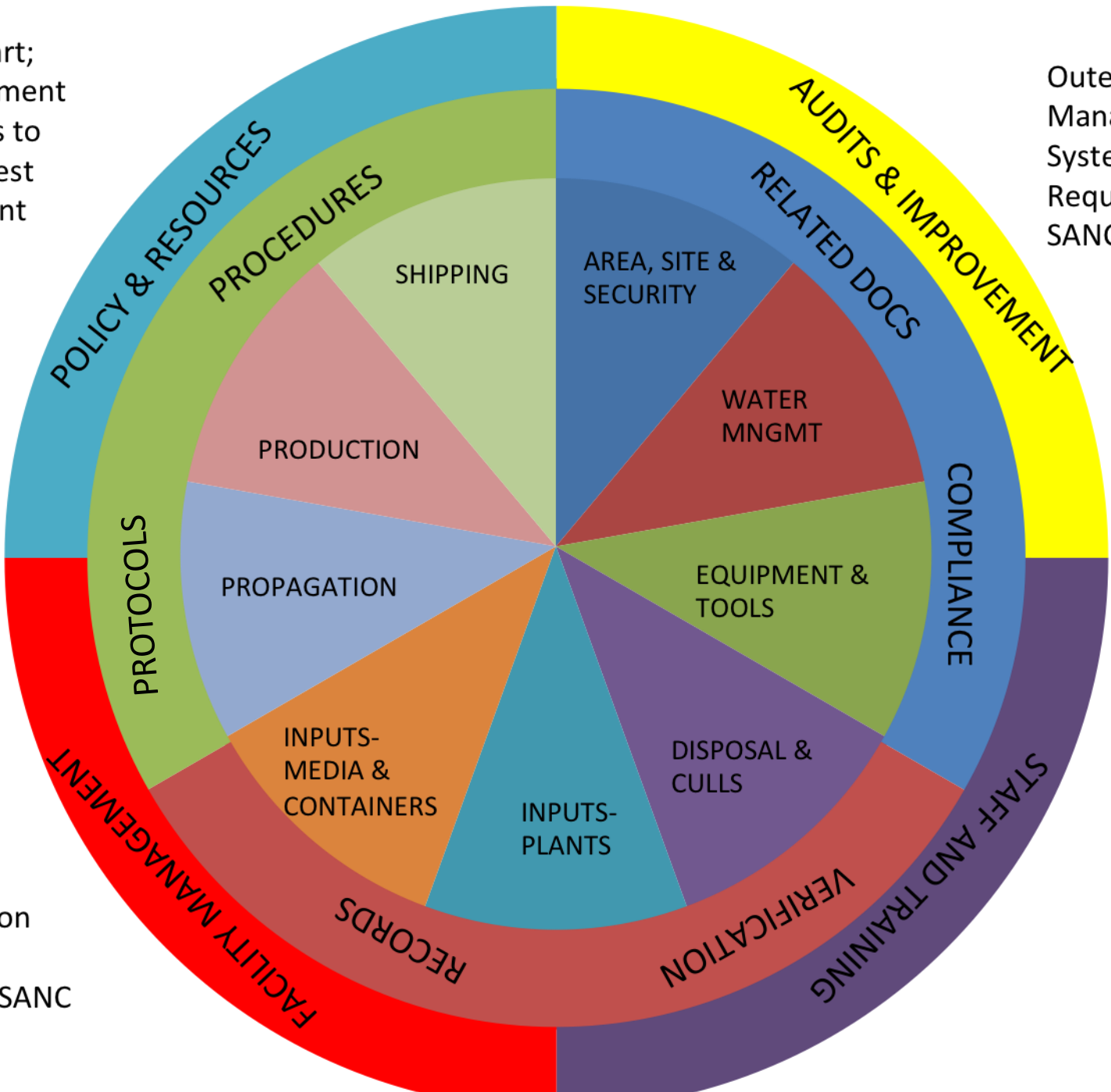
- ▶ SANC Website: sanc.nationalplantboard.org/
- ▶ Click: Tools for Industry
- ▶ Click: SANC CCP Checklist and BMP Companion Document

The Manual

- ▶ This is the actual agreement signed with the Certifying Authority and the basis for annual External Audit
- ▶ Broadly worded document to prevent the need for constant revision
- ▶ A record of revisions will be maintained
- ▶ The Manual is the property of the Grower, but available to the Certifying Authority at any time.

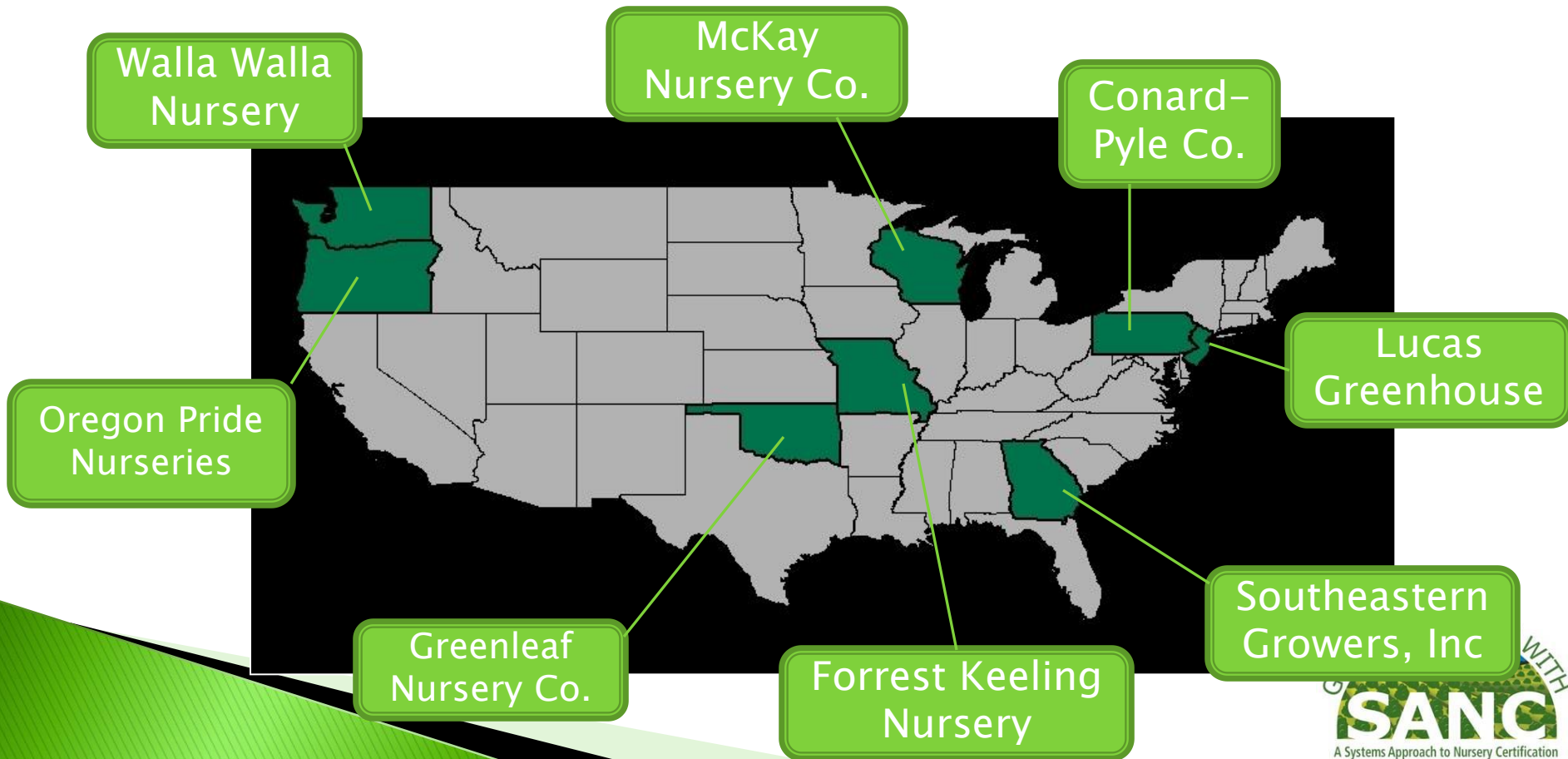
The Pie Chart;
Risk Assessment
of the slices to
write the Pest
Management
Plan

Outer Wheel:
Management
System
Required for
SANC



Inner Wheel;
Documentation
and Records
Required for SANC

SANC Pilot Initiated 2014: Pilot Operations



Pilot Nursery	Risk Assessment	Pest Management Plan	Documentation and Records	Staff and Training	Management	Audit program
Conard Pyle	Complete and reviewed	Complete, being implemented	Complete, being implemented	Complete, being implemented	Complete, being implemented	Complete, being implemented
Forrest Keeling	Onsite Complete.					
Walla Walla	Complete, ready for review	Drafted				
Oregon Pride	Complete, ready for review	Drafted, being reviewed	Drafted, ready for review	Drafted and reviewed	Drafted, ready for review	Drafted, ready for review
Lucas Green-houses	Onsite complete. RA essentially finished					
Greenleaf	Complete and ready for review	Drafted and Reviewed				
McKay	Complete and ready for review					
Southeastern Growers	Complete and ready for review	Drafted and Reviewed				



Issues Impacting Timelines

- ▶ Management Structure
- ▶ Current Level of Documentation
- ▶ Seasonality of the Industry
 - Nursery is in control of timeline
- ▶ Operational Complexities

Perceptions of “Pilot-ees”

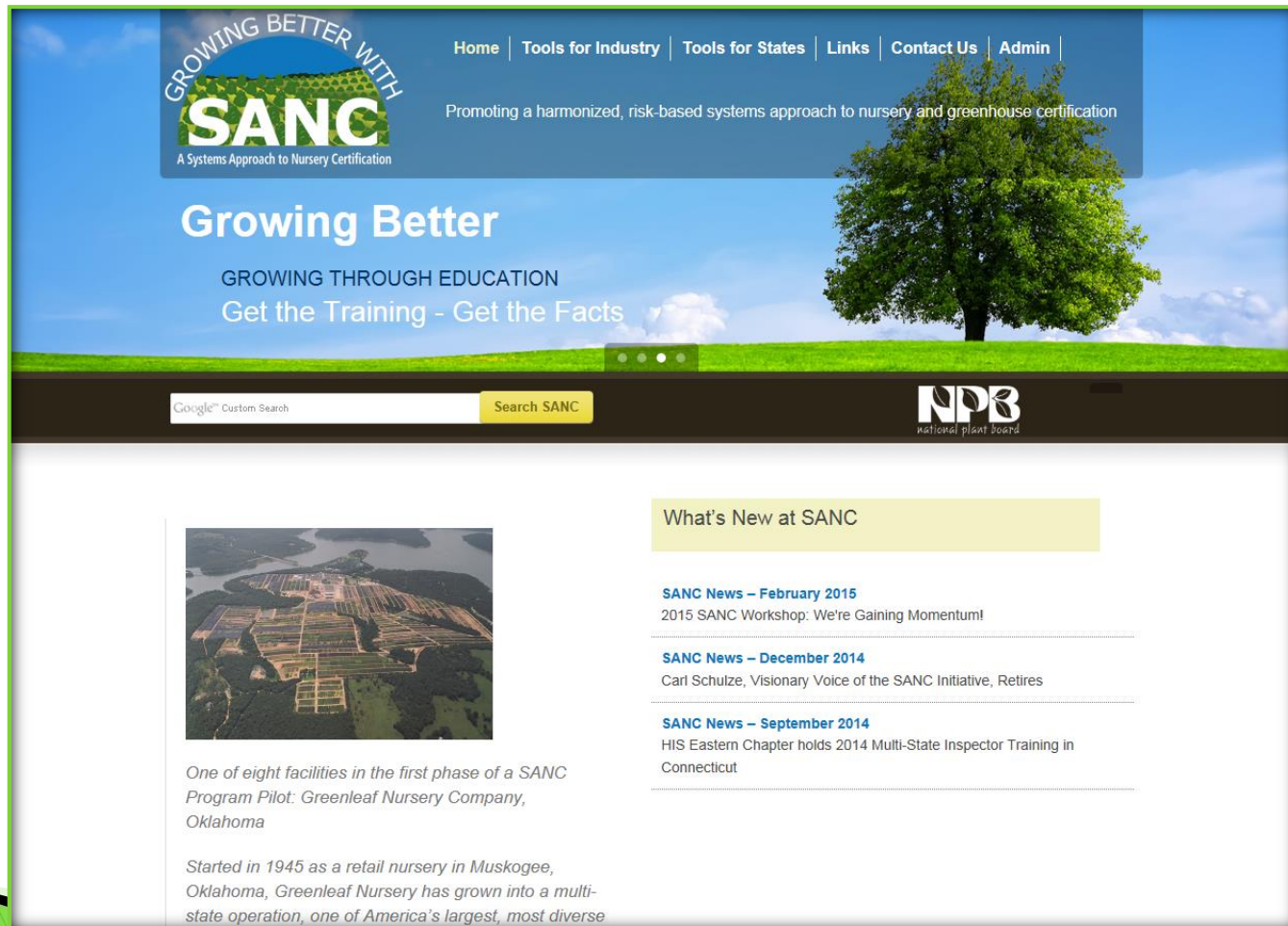
- ▶ Making them better growers, managers
- ▶ Useful structure, especially with training, recordkeeping
- ▶ Will facilitate info and knowledge transfer when management changes
- ▶ Incentives...!?

SANC – The Final Product

- ▶ Scalable
 - Works for small and large operations
- ▶ (Relative) Ease of Implementation
- ▶ Consistent across states
- ▶ Accepted by states
- ▶ International trade?

For more information:

<http://sanc.nationalplantboard.org/>



The screenshot shows the homepage of the SANC website. At the top, there is a navigation bar with links: Home, Tools for Industry, Tools for States, Links, Contact Us, and Admin. Below the navigation bar is a banner with the SANC logo and the text "Promoting a harmonized, risk-based systems approach to nursery and greenhouse certification". The main heading is "Growing Better" with the subtext "GROWING THROUGH EDUCATION" and "Get the Training - Get the Facts". Below this is a search bar with a "Search SANC" button. To the right of the search bar is the NPB logo (National Plant Board). The main content area features a large image of a tree on a grassy hill. Below the image is a section titled "What's New at SANC" with three news items: "SANC News - February 2015" (2015 SANC Workshop: We're Gaining Momentum!), "SANC News - December 2014" (Carl Schulze, Visionary Voice of the SANC Initiative, Retires), and "SANC News - September 2014" (HIS Eastern Chapter holds 2014 Multi-State Inspector Training in Connecticut). On the left side of the main content area is a smaller image of a nursery facility with a caption: "One of eight facilities in the first phase of a SANC Program Pilot: Greenleaf Nursery Company, Oklahoma". Below the image is a paragraph: "Started in 1945 as a retail nursery in Muskogee, Oklahoma, Greenleaf Nursery has grown into a multi-state operation, one of America's largest, most diverse".

GROWING BETTER WITH SANC
A Systems Approach to Nursery Certification

Home | Tools for Industry | Tools for States | Links | Contact Us | Admin

Promoting a harmonized, risk-based systems approach to nursery and greenhouse certification

Growing Better

GROWING THROUGH EDUCATION
Get the Training - Get the Facts

Google Custom Search Search SANC

NPB
national plant board

What's New at SANC

SANC News - February 2015
2015 SANC Workshop: We're Gaining Momentum!

SANC News - December 2014
Carl Schulze, Visionary Voice of the SANC Initiative, Retires

SANC News - September 2014
HIS Eastern Chapter holds 2014 Multi-State Inspector Training in Connecticut

One of eight facilities in the first phase of a SANC Program Pilot: Greenleaf Nursery Company, Oklahoma

Started in 1945 as a retail nursery in Muskogee, Oklahoma, Greenleaf Nursery has grown into a multi-state operation, one of America's largest, most diverse

