



Tree Mapping Project



**Plant
Protection
Program**

AMERICAN PUBLIC GARDENS ASSOCIATION

Daniel Stern

Manager, Plant Protection Program
American Public Gardens Association
dstern@publicgardens.org



Emerald-Ash-Borer-Bashing

Aponi Star

She may be the youngest of the crew, but is very wise and crafty with winged insects. She helps locate a nasty bug called the Emerald Ash Borer. To protect trees, Aponi can use a special wasp to kick out the unwelcome borer.



Asian-Longhorned-Beetle-Battling

FRANKIE BARKER

He is the fastest rope climber in his high school, and the first to be seen high above in the treetops. Frankie is passionate about protecting trees, especially from the nasty Asian Longhorned Beetle. Frankie is goin' after them!



Ramorum-Blight-Bravin'

Nate Green

It's funky and it's mean. When we need the facts, we count on Nate Green! He knows that oak trees and other plants are getting hassled by a wicked water mold. Destructive pathogens, you now have a reason to run!



Redbay-Ambrosia-Beetle-Bustin'

Laura Wilkins

As a freshman college student, Laura studies ecology and science. She is a born leader and fierce fighter. Don't let her smile fool you-she is after her dreaded enemy, the Redbay Ambrosia Beetle!

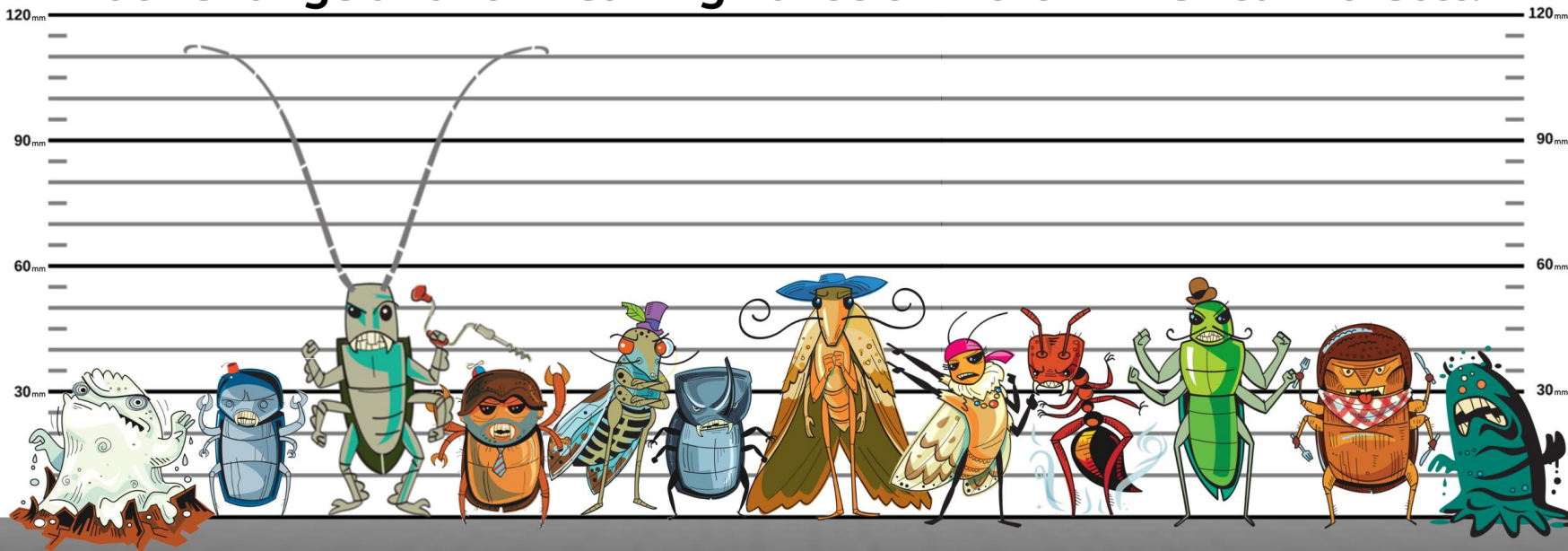


**Plant
Protection
Program**

AMERICAN PUBLIC GARDENS ASSOCIATION

Continental Dialog Meeting
November 17, 2015
Denver, CO

They're not "bad" at home, but this dirty dozen has escaped their native range and is wreaking havoc on North American forests.



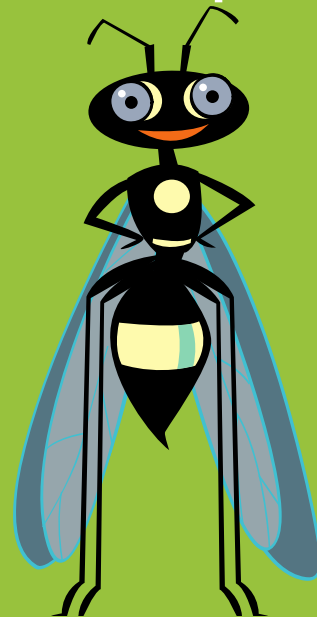
**Plant
Protection
Program**

AMERICAN PUBLIC GARDENS ASSOCIATION

Continental Dialog Meeting
November 17, 2015
Denver, CO



Hero Helper *Spechi* wasp



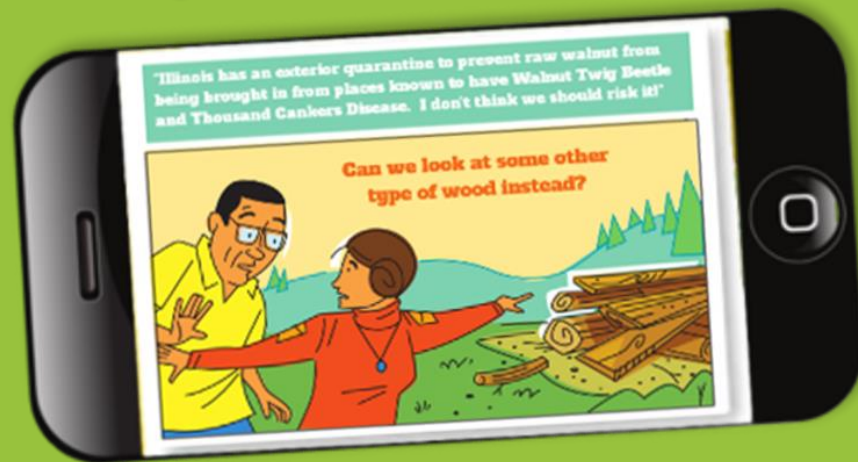
**Plant
Protection
Program**

AMERICAN PUBLIC GARDENS ASSOCIATION

Continental Dialog Meeting
November 17, 2015
Denver, CO



Comic strips



Plant
Protection
Program

AMERICAN PUBLIC GARDENS ASSOCIATION

Continental Dialog Meeting
November 17, 2015
Denver, CO



Activity books



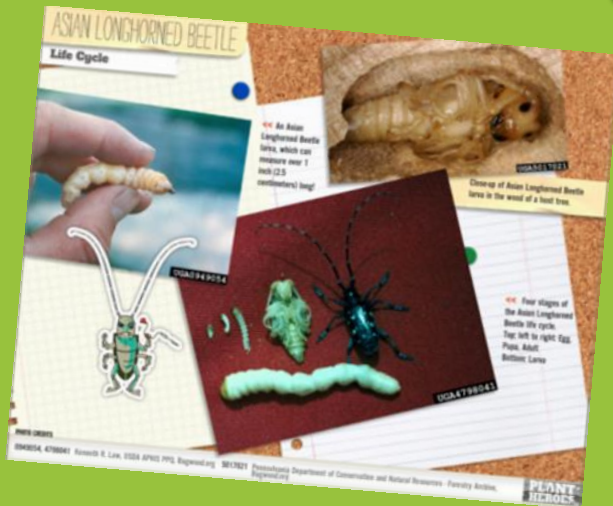
Plant
Protection
Program

AMERICAN PUBLIC GARDENS ASSOCIATION

Continental Dialog Meeting
November 17, 2015
Denver, CO



Field guides



Plant
Protection
Program

AMERICAN PUBLIC GARDENS ASSOCIATION

Continental Dialog Meeting
November 17, 2015
Denver, CO



Curriculum hub



Filter Lessons

Age

- Any -

Subjects

- Any -

Skills

- Any -

Standards

- Any -

Region

- Any -

Keywords

- Any -

Apply

Suggestions?

[Home](#) • [Lesson Search](#) • [Lessons / Activities](#)

Lessons

Smarty Plants

The lesson begins with a discussion about what pollinators are, why they are important, and the adaptations plants have to attract them. The activity that follows includes a discussion focused on specific plant adaptations for different pollinators, and students then design an imaginary plant adapted to an assigned pollinator.

Age: Seedlings (K-4)
Subjects: Science, Language Arts
Skills: Discussing, Observing, Forming Concepts
Time: One to two class periods

OPEN LESSON

Trees in Trouble-Acorn Planting

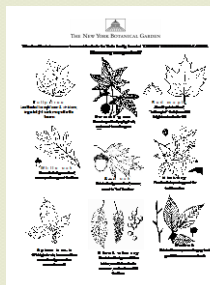
Students begin with observations of acorns and discuss how to tell if they are healthy and what they need to grow. Students then participate in a drawing activity and lengths and weights of acorns are recorded. Additional activities allow students to evaluate how environmental factors impact acorn health and ability to grow.

Age: Saplings (5-8)
Subjects: Science, Math
Skills: Observing, Organizing, Comparing and Contrasting, Measuring, Evaluating, Analyzing
Time: 2-3 Class Periods

OPEN LESSON

About this Lesson

Age: Seedlings (K-4)
Skills: Observing, Field Work, Classifying, Forming Concepts
Keywords: Gardens



[Home](#)

Identifying Plant Family Characteristics

Lesson:

Activity Description:

In this botany field activity, students make observations of the similarities and differences between three types of garden plants (cucumber, pumpkin, and melon) to determine why they are grouped together in one plant family. Students will record their observations in a journal and use these to make predictions of the plant family's defining characteristics.

Standards Addressed: 5.1.1.1.3 differences in observations lead to more observation

Objective:

This activity is designed for students to discover how making observations of the environment is the key to making sound predictions. Students will also learn how both positive and negative outcomes of these predictions can affect and shape future decisions. This is a beginning of the year activity when the garden is in full harvest, and two additional concepts will be to practice good stewardship while observing and to show respectful sharing of the space with others. Vocabulary focus of this lesson: characteristic, stewardship, respect, observe.

Materials:

- Garden or planting box with cucumber, pumpkin, and melon plants
- Journals for student observations

Time: Long-term activity

PDF Upload: [Identifying plant family characteristics.pdf](#)

Source: Kate Olson, SERC at Carleton College via OERCommons, www.oercommons.org



Plant
Protection
Program

AMERICAN PUBLIC GARDENS ASSOCIATION

Continental Dialog Meeting
November 17, 2015
Denver, CO



Games



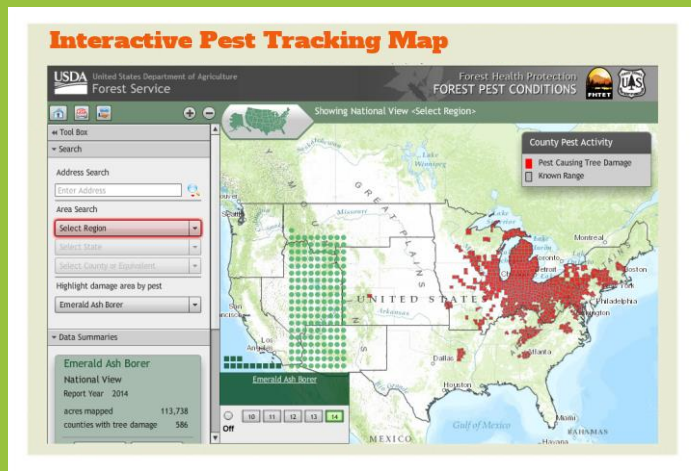
Plant
Protection
Program

AMERICAN PUBLIC GARDENS ASSOCIATION

Continental Dialog Meeting
November 17, 2015
Denver, CO



Instructional enhancements



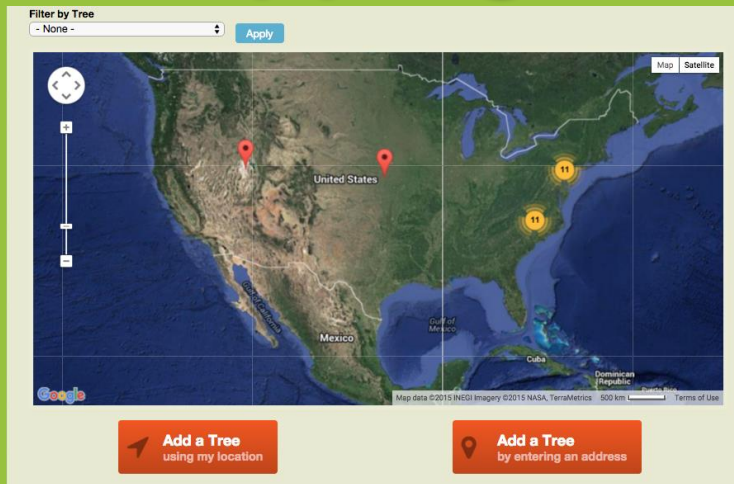
**Plant
Protection
Program**

AMERICAN PUBLIC GARDENS ASSOCIATION

Continental Dialog Meeting
November 17, 2015
Denver, CO



Tree Mapping Project



**Plant
Protection
Program**

AMERICAN PUBLIC GARDENS ASSOCIATION

Continental Dialog Meeting
November 17, 2015
Denver, CO



1
Select Tree

2
Enter Details

3
Add to Map



Select a Tree

Hardwoods (mostly deciduous trees)

Maple

✓ - None -

Bigleaf maple

Boxelder maple

Red maple

Silver maple

Sugar maple

Maple sp. (type not listed / not sure)



✓
Select Tree

Hardwoods (mostly deciduous trees) | Maple | Maple sp. (type not listed / not sure)

2
Enter Details

3
Add to Map



Enter Your Details

Start by creating your Group Map, below. Then you can add details about the trees around you!

Name Your Map

|

Make up a name for your map and enter it here! That way, if you want to add more trees later, just type in the first few letters and pick your map from the list that appears.

First Name (optional)

Email (optional)



**Plant
Protection
Program**

AMERICAN PUBLIC GARDENS ASSOCIATION

Continental Dialog Meeting
November 17, 2015
Denver, CO



✓
Select Tree

Hardwoods (mostly deciduous trees) | Maple | Maple sp. (type not listed / not sure)

✓
Enter Details



③
Add to Map

Add Plant to Map

Country

United States

Street

105 Eugene St. |

City

Carrboro

State/Province

North Carolina

Postal code

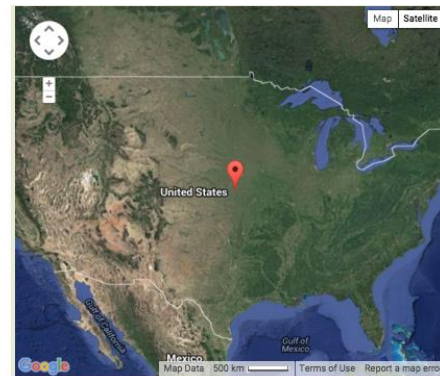
27510

Find Address on Map →

①
Select Tree

②
Enter Details

③
Add to Map



Back

Save →



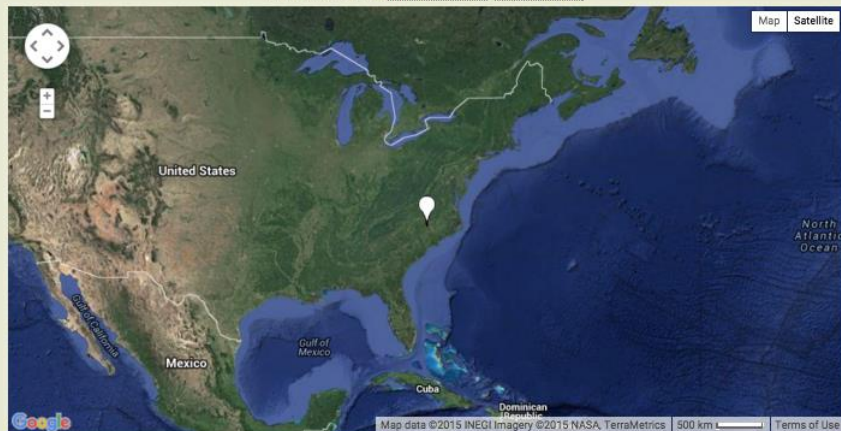
**Plant
Protection
Program**

AMERICAN PUBLIC GARDENS ASSOCIATION

Continental Dialog Meeting
November 17, 2015
Denver, CO



105 Eugene St.
27510 Carrboro, NC 35° 54' 25.668" N, 79° 4' 5.322" W



[Click Here to See More Trees of this Type](#)

[Add Tree Nearby](#)

[See All Trees on Your Map](#)

Plant Hero Details

Group Map:

Mr. Murgels Class

Organization / Site:

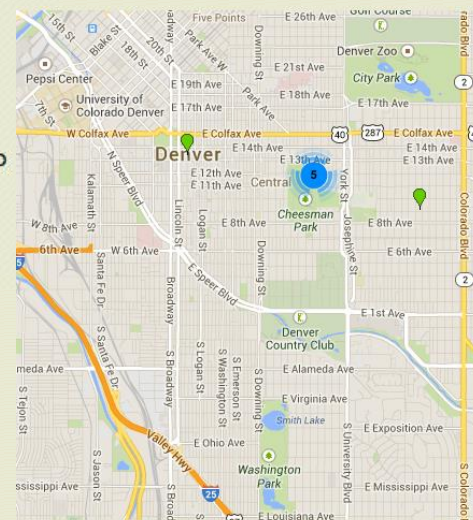
Denver Botanic Gardens Field Trip

Email (optional):

jmurgel@tafteelementary.org

Tree Info

Green ash



Plant
Protection
Program

AMERICAN PUBLIC GARDENS ASSOCIATION

Continental Dialog Meeting
November 17, 2015
Denver, CO



Report Invasive Bugs and Pathogens

Early detection is the key to stopping the bad guys! If you think you see symptoms of one of these plant pests or diseases, please notify your local cooperative extension office so they can come check it out!

Click on your state to find contact information for the cooperative extension office closest to you!



**Plant
Protection
Program**

AMERICAN PUBLIC GARDENS ASSOCIATION

Continental Dialog Meeting
November 17, 2015
Denver, CO

Thanks to our program sponsors

Animal and Plant Health
Inspection Service



United States
Forest Service



Plant
Protection
Program

AMERICAN PUBLIC GARDENS ASSOCIATION

Daniel Stern

Manager, Plant Protection Program
American Public Gardens Association
dstern@publicgardens.org