

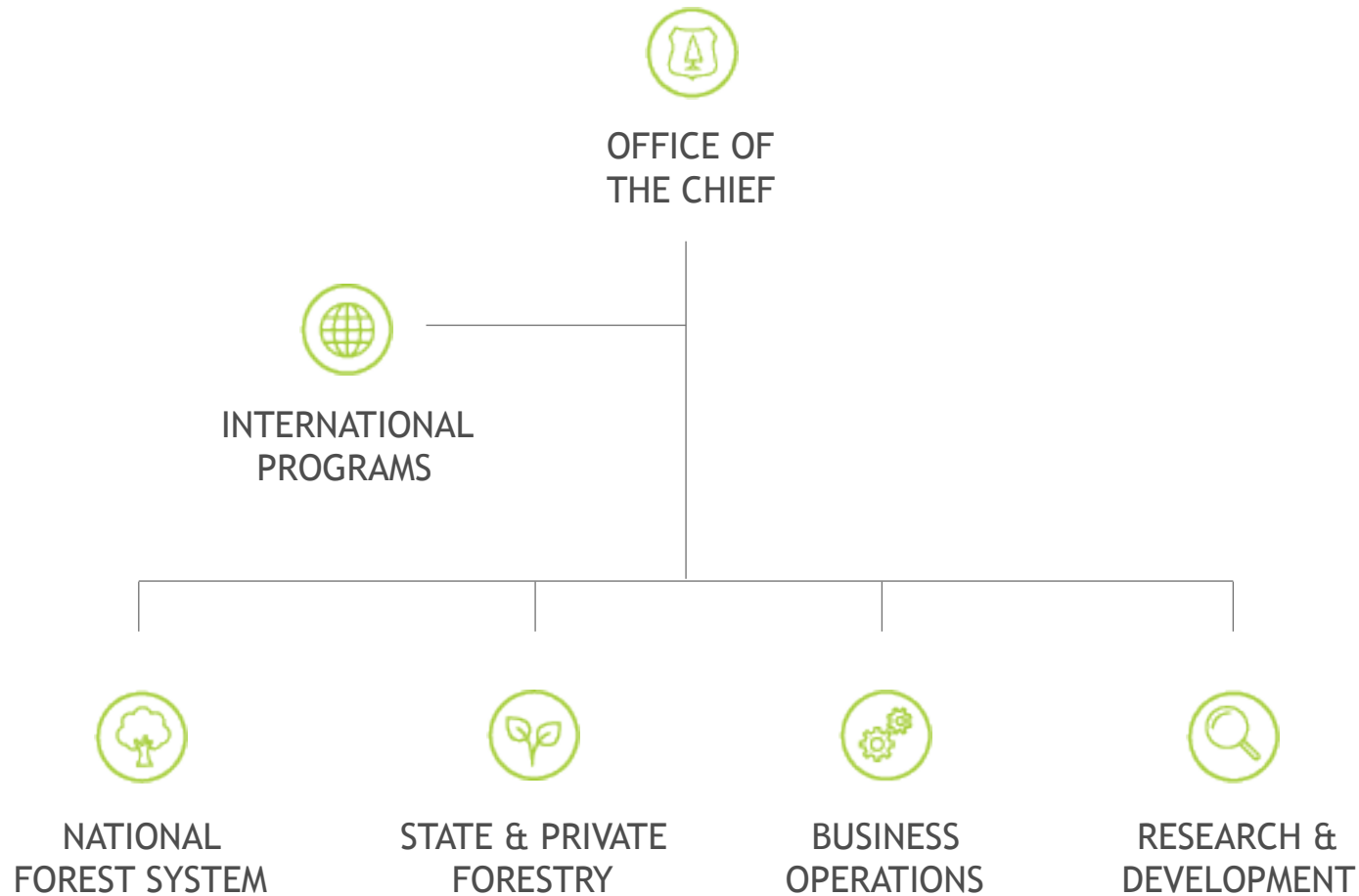
Forest Health First Detector Network

US Forest Service International Programs

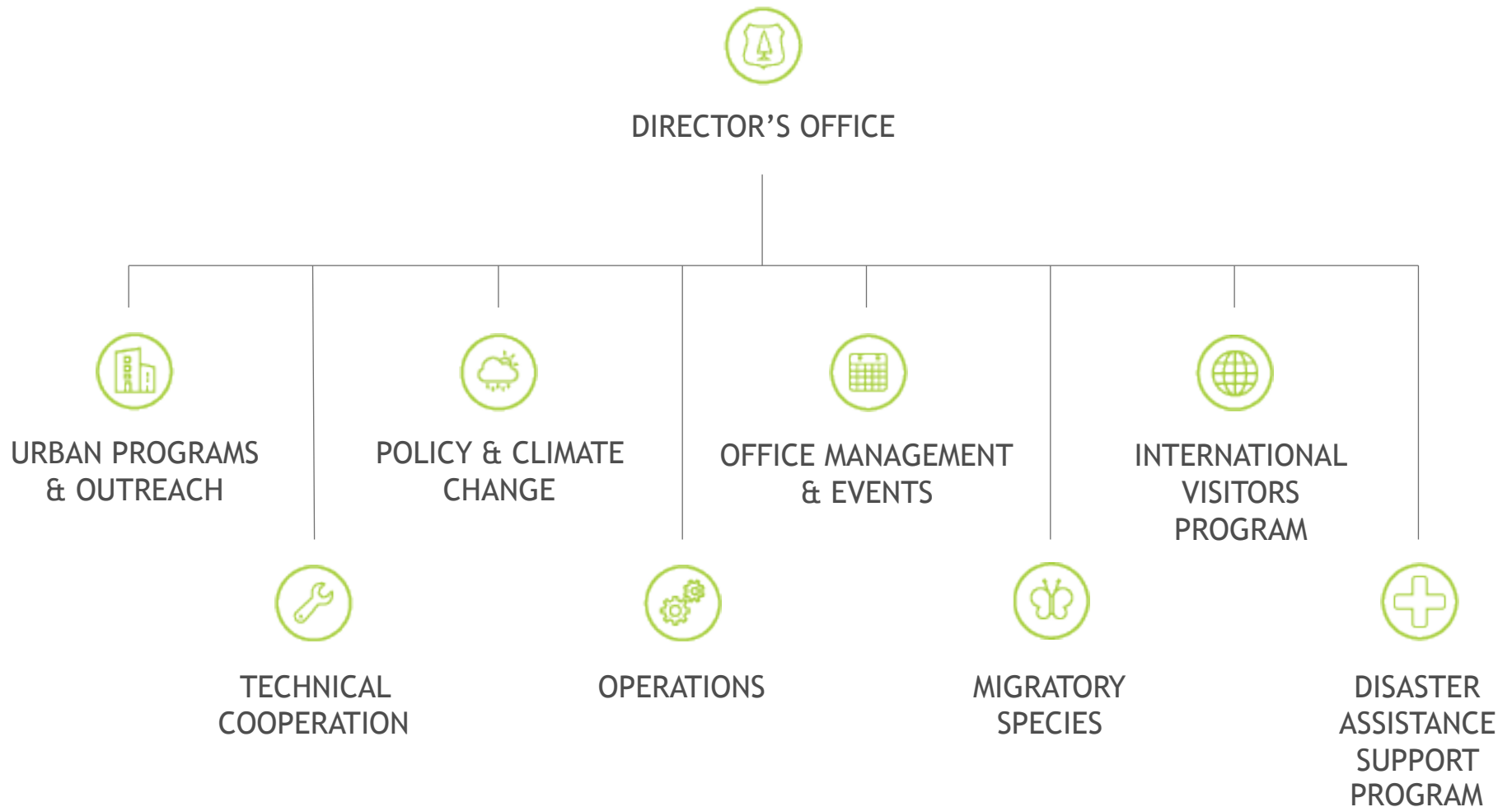
Beth Lebow | November 9, 2017



US FOREST SERVICE DEPUTY AREAS



INTERNATIONAL PROGRAMS TODAY

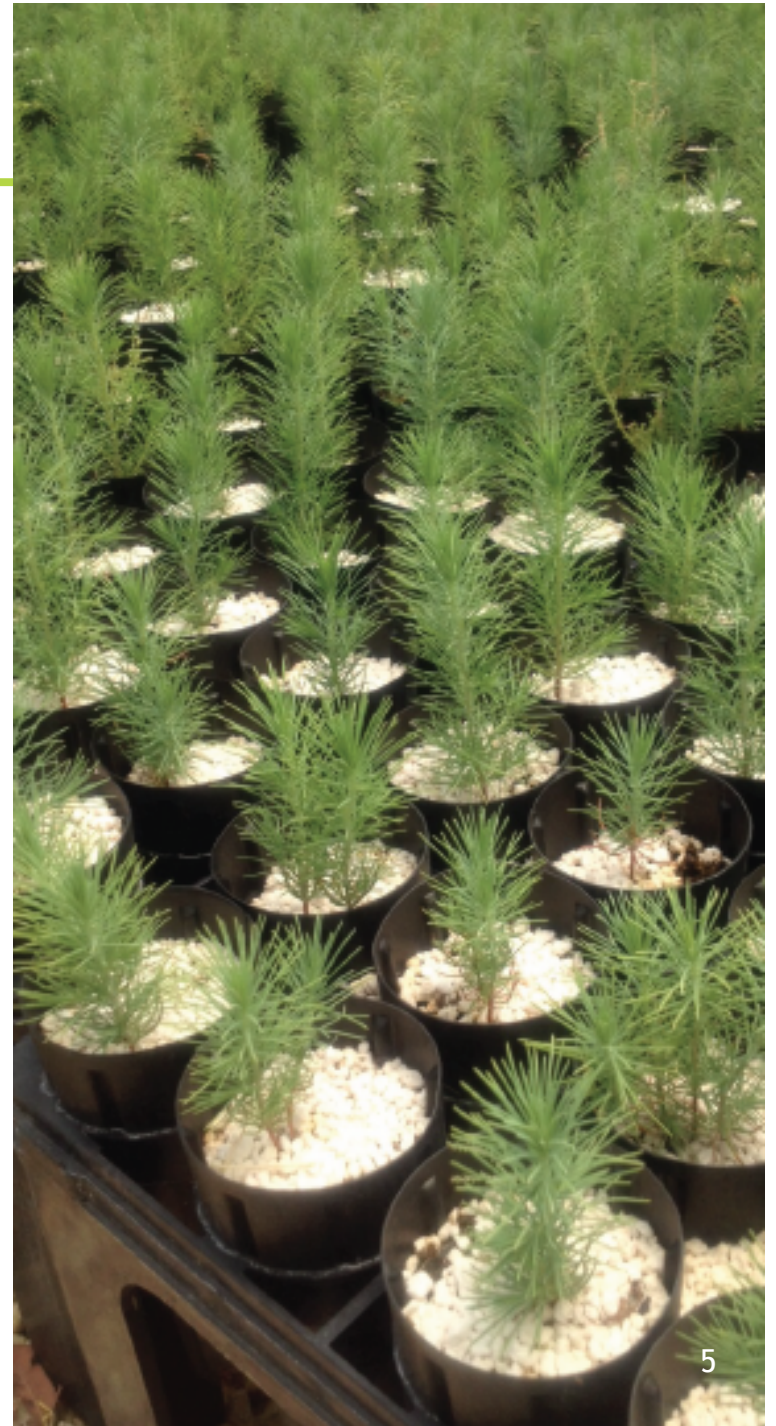


**USFS WORKS
IN OVER
90 COUNTRIES
TO IMPROVE
NATURAL
RESOURCE
MANAGEMENT**



PROGRAM TOPIC AREAS

- Illegal Logging & Forest Governance
- Climate Change and Ecosystem Services
- Urban programs
- Forest health & invasive species
- Habitat management & migratory species
- Fire management
- Forest monitoring
- Disaster programs
- Protected areas & ecotourism
- Sustainable land use planning & management
- Policy program
- International visitor program



A photograph of four indigenous children, likely from a tribe in Central or South America, with red ochre or clay painted on their faces. They are smiling and looking towards the camera. The background is a blurred natural setting with trees and foliage.

PROGRAM GOALS

- **Improve people's lives globally** by mobilizing expertise to assist in conservation and natural resource management activities, disaster preparedness and response, policy development, and trade issues
- Bring important research, technology, and other innovations back to the U.S.
- Expand and leverage our international engagement to **promote a more diverse and inclusive agency**

CURRENT SUPPORT

- Direct Appropriation
- Funding by external partners
 - USAID
 - Department of State
 - Millennium Challenge Corporation



USAID
FROM THE AMERICAN PEOPLE



INTERNATIONAL ENGAGEMENT REQUIRED

IP invests and leverages our USFS resources on issues critical to our domestic interests.



INVASIVE SPECIES



MIGRATORY SPECIES



ILLEGAL LOGGING &
TRADE



SHAPING INTERNATIONAL
FORESTRY POLICY



...AND MORE

INVASIVE SPECIES PROJECTS



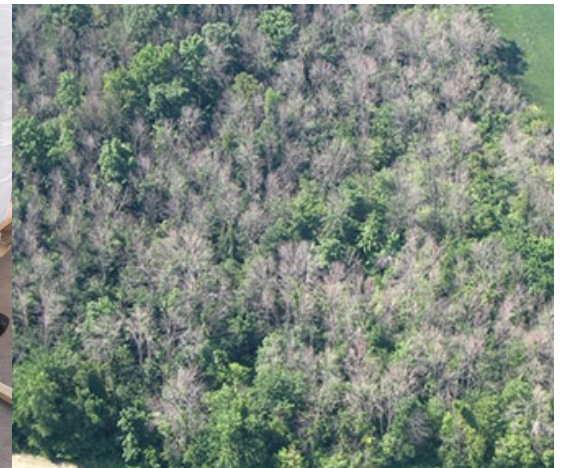
- Support collaboration between USDA scientists and other country counterparts on significant forest pests in the U.S.
- Collaborative research is critical to control and prevent infestations affecting U.S. forests

Benefits to U.S. include:

- Improved control of existing pests
- Prevention of potential infestations
- Protects U.S. forests for their significant environmental and economic values

INVASIVE SPECIES PARTNERSHIPS

- Research collaborations between USFS/USDA scientists and international scientists from invasive pest country of origin
 - Emerald ash borer and other wood-boring insects (China)
 - European woodwasp (Argentina, South Africa, Spain)
 - Albizia (Indonesia and Papua New Guinea)
 - Chestnut gall wasps (China)
- Forest Health First Detectors Network and Outreach Initiative



FOREST HEALTH FIRST DETECTOR NETWORK AND OUTREACH INITIATIVE

- USFS-funded
- Implemented by TNC
- Partners
 - Continental Dialogue
 - AmericanHort
 - National Wood Pallet and Container Association
- Project Goal: Increase the number of people who are actively looking for and reporting high-consequence pests at vulnerable points along high-risk pathways
- Activities
 - Inventory existing and develop new outreach materials for workers in landscaping and wood pallet and container industries
 - Use a variety of engagement and outreach platforms to train workers
 - Explore partnerships in China and SE Asia

PROGRESS TO DATE

- Ongoing inventory of available training and educational resources for detection and prevention of non-native invasive pests
- Evaluating existing educational and distribution networks for employee training in nursery and wood pallet and container industries
- Established a subcommittee within the Continental Dialogue for project implementation



THANK YOU.

FOR MORE INFORMATION ON INTERNATIONAL PROGRAMS:
www.fs.fed.us/about-agency/international-programs

BETH LEBOW | ETLEBOW@FS.FED.US

