

# International Plant Protection Convention International Standard for Phytosanitary Measures 15 (ISPM 15)



*Guidelines for Regulating the  
Wood Packaging Material (WPM) Standard in the  
Transport of Commodities*

*John.T.Jones@usda.gov*

# International Plant Protection Convention (IPPC)

- A multilateral international treaty dealing with preventing the spread and introduction of plant pests
- 184 Signatory governments
- Food and Agriculture Organization (FAO) of the United Nations
- Harmonizes the requirements between signatory countries
- Each member country is responsible for their own regulation and implementation

# ISPM 15 REVISIONS

- **2006 CPM 1** -- modifications to MB fumigation schedule
- **2009 CPM 4** -- inclusion of debarking requirements; change in MB presentation tables; removal of extraneous information from the mark
- **2013 CPM 8** – revision of debarking tolerances, MB fumigation temperature ranges and, and DH treatment requirements were set
- **2018 CPM 13** -- inclusion SF fumigation and revision of DH section

# Specific Components of the ISPM15 Standard

Methyl Bromide (MB) treatment requires official program with official marks and oversight by the NPPO

Minimum  
concentration g/m<sup>3</sup>

Temperature	Dosage rate	2 hrs	4 hrs	12 hrs	24 hrs
21°C or above	48	36	31	28	24
16°C or above	56	42	36	32	28
10 °C or above	64	48	42	36	32

## **Specific Components of the ISPM15 Standard cont'd**

### **HEAT TREATMENT:**

- Wood Packaging Material heated to a minimum wood core temperature of 56°C for minimum of 30 minutes.
- Required by the standard to be an official program with official marks and official oversight by the NPPO

# Import Permit

## HEAT-TREATED LUMBER

- Heat treat in accordance with HT treatment T314-c -- to 71.1 degrees Celsius, minimum core temperature, and maintained for a minimum of 75 minutes;

OR

- Heat treat with moisture reduction to 71.1 degrees Celsius, minimum core temperature, and maintained for a minimum of 75 minutes, with moisture reduced below 20 %.

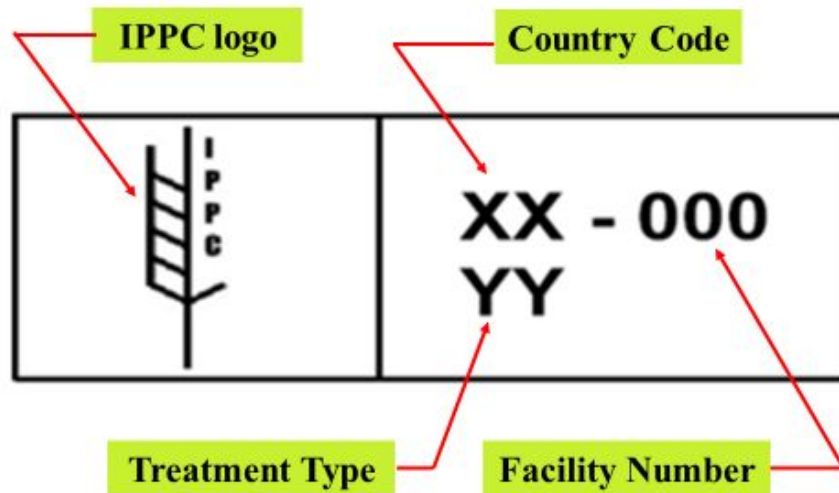


# Basic Concerns



- Treatment Failure
- Poor Repair or Remanufacture Procedures
- Fraud
- Untreated

# Compliant WPM



- Valid and legible IPPC logo
- No presence of WPM pests
- Bark within the approved limits

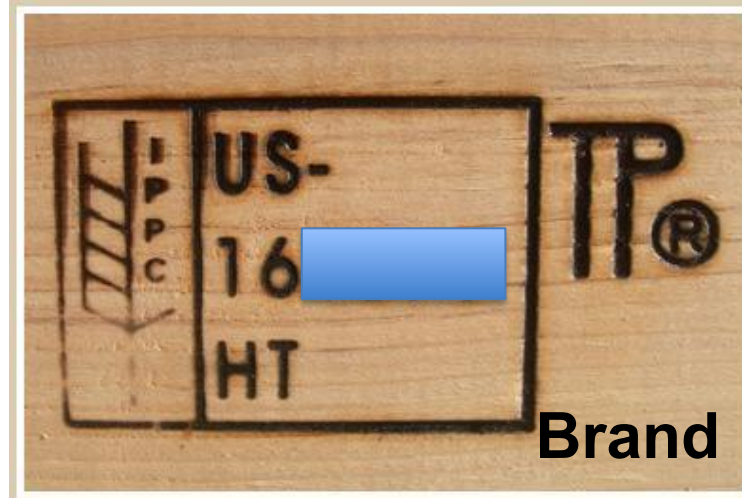
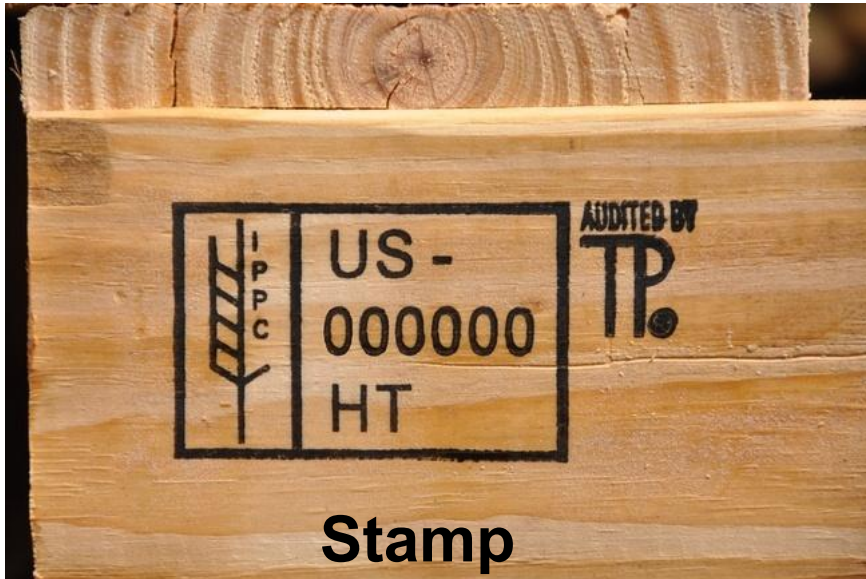


## **INDUSTRY OUTREACH**

Partnering with industry to highlight concerns and perform webinar outreach:

- Marking
- Bark limits
- Pest damage
- Improving compliance
- Information Resources

# Examples of Compliant IPPC Logos



# Examples of Non-Compliant IPPC Logos



Inappropriately  
marked WPM





# Examples of Non-Compliant WPM



Bark



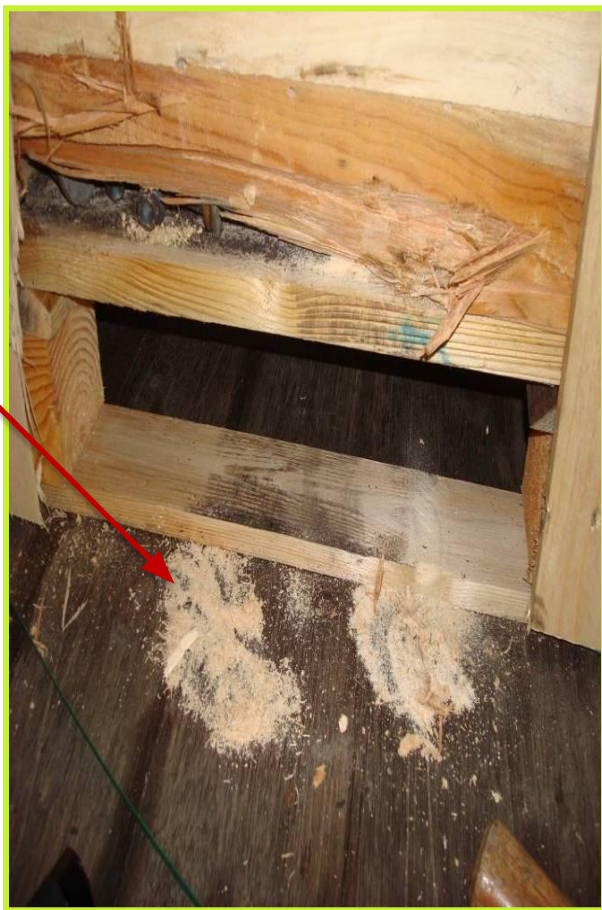
# Indicators of WPM Pest Presence





## Indicators of WPM Pest Presence (Continued)

**Frass**



# Non-Compliant WPM



Infested with pests



# **What can you do to comply with ISPM 15?**

- Ask your WPM provider if they are ISPM 15 compliant and accredited. Review the certification provided by the National Plant Protection Organization (NPPO).
- Provide information on the ISPM 15 standard.
- Provide websites and contact information regarding how to become compliant. The NPPO will have information on the local program.
- Require ISPM 15 compliance in the contract.
- Inspect the WPM for signs of pest when delivered or before use.
- Do a cost benefit analysis if considering alternatives to WPM.
- Realize there is a \$ cost \$ for noncompliance (penalties, demurrage, re-export costs, and production delays).



## Resources

### Wood Import Issues

- ❖ **Dr. Jon M Daniels**, - APHIS, Riverdale, MD  
[jon.m.daniels@usda.gov](mailto:jon.m.daniels@usda.gov)

ISPM 15 web address

- [ISPM\\_15\\_2018\\_En\\_WoodPackaging\\_Post-CPM13\\_Rev\\_Anne\\_x1and2\\_Fixed\\_2019-02-01.pdf \(ippc.int\)](https://www.ippc.int/sites/default/files/ISPM_15_2018_En_WoodPackaging_Post-CPM13_Rev_Anne_x1and2_Fixed_2019-02-01.pdf)

USDA; APHIS WPM information

- [USDA APHIS | Wood Packaging Material](#)

NPPO contact information by country. Select the country of interest to display the contact information

- [Countries List: Countries - International Plant Protection Convention \(ippc.int\)](#)

For additional questions,  
please email:  
[john.t.jones@usda.gov](mailto:john.t.jones@usda.gov)

Thank you!

